

Advanced Printer Driver for South Asia Ver.4

TM Printer Manual

APD Overview

Descriptions of the APD features.

Using the APD

Descriptions of simple printings and useful functions.

Reference

Descriptions of property settings of the printer driver.

TM Flash Logo Setup Utility Ver.3

Descriptions of how to set and use the
TM Flash Logo Setup Utility Ver3.

Restrictions

Descriptions of restrictions on use of the APD.

Printer Specification

Descriptions of the specifications of TM-T81.



Cautions

- No part of this document may be reproduced, stored in a retrieval system, or transmitted in any form or by any means, electronic, mechanical, photocopying, recording, or otherwise, without the prior written permission of Seiko Epson Corporation.
- The contents of this document are subject to change without notice. Please contact us for the latest information.
- While every precaution has taken in the preparation of this document, Seiko Epson Corporation assumes no responsibility for errors or omissions.
- Neither is any liability assumed for damages resulting from the use of the information contained herein.
- Neither Seiko Epson Corporation nor its affiliates shall be liable to the purchaser of this product or third parties for damages, losses, costs, or expenses incurred by the purchaser or third parties as a result of: accident, misuse, or abuse of this product or unauthorized modifications, repairs, or alterations to this product, or (excluding the U.S.) failure to strictly comply with Seiko Epson Corporation's operating and maintenance instructions.
- Seiko Epson Corporation shall not be liable against any damages or problems arising from the use of any options or any consumable products other than those designated as Original EPSON Products or EPSON Approved Products by Seiko Epson Corporation.

Trademarks

EPSON® and ESC/POS® are registered trademarks of Seiko Epson Corporation in the U.S. and other countries.

MS-DOS®, Microsoft®, Win32®, Windows®, Windows Vista®, Windows Server®, Visual Studio®, Visual Basic®, Visual C++®, and Visual C#® are either registered trademarks or trademarks of Microsoft Corporation in the United States and other countries.

ESC/POS® Command System

EPSON has been taking industry's initiatives with its own POS printer command system (ESC/POS). ESC/POS has a large number of commands including patented ones. Its high scalability enables users to build versatile POS systems. The system is compatible with all types of EPSON POS printers (excluding the TM-C100) and displays. Moreover, its flexibility makes it easy to upgrade the future. The functionality and the user-friendliness is valued around the world.

Copyright © 2010 Seiko Epson Corporation. All rights reserved.

For Safety

Key to Symbols

The symbols in this manual are identified by their level of importance, as defined below. Read the following carefully before handling the product.

CAUTION

Provides information that must be observed to avoid damage to your equipment or a malfunction.

NOTE

Provides important information and useful tips.

Restriction of Use

When this product is used for applications requiring high reliability/safety such as transportation devices related to aviation, rail, marine, automotive etc.; disaster prevention devices; various safety devices etc; or functional/precision devices etc, you should use this product only after giving consideration to including fail-safes and redundancies into your design to maintain safety and total system reliability. Because this product was not intended for use in applications requiring extremely high reliability/safety such as aerospace equipment, main communication equipment, nuclear power control equipment, or medical equipment related to direct medical care etc, please make your own judgment on this product's suitability after a full evaluation.

About this Manual

Aim of the Manual

This manual is aimed to provide all the necessary information for development engineers to develop, design, and install POS system, or to develop and design printer applications.

Manual Content

The manual is made up of the following sections:

| | |
|-----------|---|
| Chapter 1 | APD Overview |
| Chapter 2 | Using the APD |
| Chapter 3 | Reference |
| Chapter 4 | TM Flash Logo Setup Utility Ver.3 |
| Chapter 5 | Restrictions |
| Appendix | Printer Specification |

Contents

| | |
|----------------------------|---|
| ■ For Safety | 3 |
| Key to Symbols | 3 |
| ■ Restriction of Use | 3 |
| ■ About this Manual | 4 |
| Aim of the Manual..... | 4 |
| Manual Content | 4 |
| ■ Contents | 5 |

APD Overview 9

| | |
|---|----|
| ■ Introduction..... | 9 |
| Manual organization | 9 |
| ■ Inquiries | 9 |
| ■ APD4 Features..... | 10 |
| Printing Example | 12 |
| ■ Differences Depending on the OS | 12 |

Using the APD..... 13

| | |
|---|----|
| ■ Application Printer Settings..... | 13 |
| ■ Character Printing (TrueType fonts) | 14 |
| ■ Character Printing (Device Font) | 15 |
| Setting Device Font | 15 |
| Printing Method | 16 |
| Program | 16 |
| ■ Character Printing (Thai Device Fonts) | 17 |
| Configuration and Name of Thai Characters | 17 |
| Selecting the Thai Device Fonts..... | 17 |
| Cautions for Using the Thai Device Font | 18 |
| ■ Printing a Barcode | 19 |
| Barcode font setting..... | 19 |
| Printing Method | 20 |
| Program | 21 |
| ■ Printing a 2D-Code | 22 |
| Setting the 2D-Code Font..... | 22 |
| Printing Method | 23 |
| Program | 24 |

| | |
|---|-----------|
| ■ Device Font Printing in a .NET Environment | 25 |
| Substituting Fonts | 25 |
| Font Substitution Settings | 26 |
| Printing Using a Device Font | 27 |
| Printing Barcodes/2D-Code Fonts | 28 |
| Controlling the TM Printer: Control Font/Control A Font | 29 |
| ■ Rotated Printing | 30 |
| Rotate Printing Settings | 31 |
| ■ Background printing | 32 |
| Water Mark setting | 32 |
| ■ Printing a Logo | 33 |
| Bitmap registration | 33 |
| Logo printing | 33 |
| ■ Paper Feed and Paper Cut | 36 |
| Setting paper cut with the printer driver | 36 |
| Specifying Control Font and performing paper cut in programming | 37 |
| ■ Drawer Control | 38 |
| Opening Drawer with printer driver setting | 38 |
| Opening Drawer by Control Font | 39 |
| ■ How to Use ControlA Font | 40 |
| Setting ControlA Font | 40 |
| Using ControlA Font | 41 |

Reference43

| | |
|-------------------------------|-----------|
| ■ Properties | 44 |
| General | 45 |
| Sharing | 46 |
| Ports | 47 |
| Advanced | 48 |
| Color Management | 50 |
| Security | 51 |
| Utility | 52 |
| Version | 57 |
| ■ Printing Preferences | 58 |
| Main | 59 |
| Layout | 60 |
| Water Mark | 63 |
| Document Settings | 64 |
| Halftone Settings | 76 |
| Printer Settings | 77 |
| Barcode | 81 |
| 2D-Code | 84 |
| Font | 89 |

| | |
|---|------------|
| TM Flash Logo Setup Utility Ver.3..... | 91 |
| ■ Storing Logos..... | 91 |
| ■ Reference | 94 |
| | |
| Restrictions | 97 |
| | |
| Printer Specification..... | 101 |



APD Overview

Introduction

The Advanced Printer Driver Version 4 (APD4) is a printer driver for the EPSON TM printers (referred to as the TM printer henceforth). Using the Status API, the APD also can be used to monitor the TM printer status in your POS system.

Manual organization

Install Manual

Descriptions of the procedures from installing the APD to performing test print, adding printer drivers, and the silent install which is an automated APD installation.

TM Printer Manual

This manual. Descriptions of how to use the APD and its functions.
Descriptions of the specifications of TM-T81.

Status API Manual

Descriptions of how to get the status of the TM printer from the user application by using the Status API.

Devmode API / PRINTERINFO Manual

Descriptions of how to configure some printer functions on your application using the Devmode API. Descriptions of the PRINTERINFO Function of Windows.

Inquiries

Drivers and manuals for using the TM-T81 are not packed with it, so inquire to your dealer as for them.

ESC/POS commands

ESC/POS commands are not open to the public. Ask your sales representative for details.

APD4 Features

Easy

- Allows you to print from commercially available applications, since the APD is a Windows driver.
- Allows you to print a Barcode and 2D-Code with the fonts built in the APD.
(["Printing a Barcode" on page 19](#))
- Allow you to print logos and graphics. (["Printing a Logo" on page 33](#))
- Allows you to send the paper cut command to the TM printer.
(["Paper Feed and Paper Cut" on page 36](#))
- Allows you to send the open command to the cash drawer. (["Drawer Control" on page 38](#))
- The following languages are available for text on screen and help dialog. Allows you to select your language for easy settings and proper operations.

| | | | | |
|----------|-----------|--------------------|---------------------|-----------------|
| English | Japanese | Chinese-Simplified | Korean | Chinese-Hongkon |
| Croatian | Czech | Hungarian | Slovenian | Russian |
| Danish | Dutch | Finnish | French | German |
| Italian | Norwegian | Portuguese | Spanish | Swedish |
| Turkish | Thai | Vietnamese | Chinese-Traditional | |

Fast

The printing speed differs depending on the models or interfaces of the TM printers. For more details, see the Technical Reference Guide of the TM printer.

- Achieves high speed printing using the Device fonts of the TM printer.
(["Character Printing \(Device Font\)" on page 15](#))
- Allows you to convert the Windows fonts to the Device fonts.
- Allows you to print an image such as a store logo faster by registering the image in the TM printer. (["Printing a Logo" on page 33](#))

Convenience

- By rotated printing, you can print on paper with a long width such as coupons. When using the TM printer oriented vertically (wall mount), it can print backward to make it easy to read for customers. (["Rotated Printing" on page 30](#))
- Allows you to print images as a background.
(["Background printing" on page 32](#))
- Allows you to print A4 size document automatically scaled down to fit the paper width.
- With the device fonts (FontA/B), all the code pages stored in your TM printer can be printed.

Expandability

- Printer sharing is supported. Allows you to share TM printer with other computers on a network. (Printer sharing through a print server is not supported.)
- Allows you to use ESC/POS commands control. (["How to Use ControlA Font" on page 40](#))

Programming

- Win32/.NET environment is supported. See the "Status API Manual" to find out which development language is supported.
- Allows you to check the status of the device (TM printer) by using the Status API.

CAUTION

In Terminal Service / Citrix XenApp environment, Status API and PRINTER_INFO_2 cannot be used.

- It can be printed as any name from your application by specifying the device font. (["Printer font advanced setting" on page 90](#))

Installation

- Allows you to copy the existing settings of the APD environment to other computers. (Silent Install)
- After the APD installation, the printer driver will be automatically installed to the TM printer equipped with a USB interface by the Plug and Play function.

Compatibility

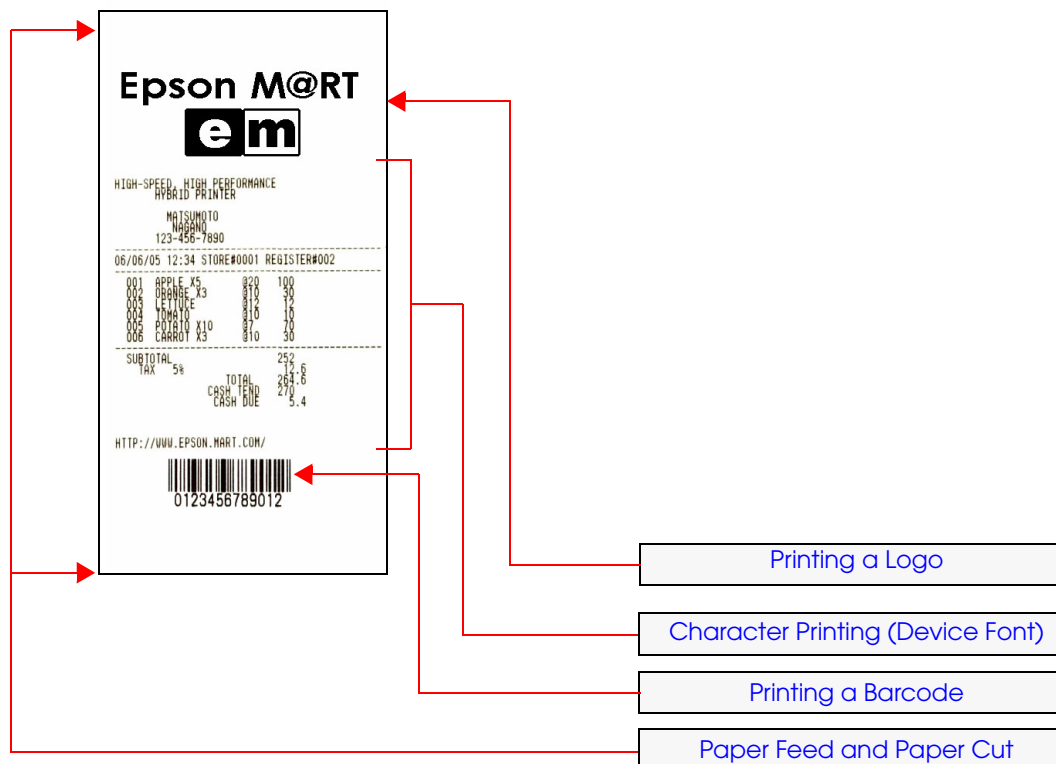
- Note that APD 4.xx cannot coexist with APD 2.xx or 3.xx.

CAUTION

- When you install APD 4.xx in an environment in which APD 2.xx or 3.xx is already installed, APD first automatically uninstalls the previous version before installing 4.xx
- APD 4.xx does not support some TM printers. Check that your TM printer is, in fact, supported by APD 4.xx. If you install APD4.xx in an environment featuring an unsupported TM printer, then you will no longer be able to use that TM printer.

- This can coexist with an OPOS driver. However, the version combination of APD and OPOS is limited. (["Restrictions" on page 97](#))

Printing Example



Differences Depending on the OS

The content of the descriptions of some operations in this book may be different depending on the OS. See the following.

| Item | Description |
|--------------------------|--|
| Screens shown | Screens in Windows Vista are used for the descriptions in this manual. |
| Setting a printer driver | <p>Windows 7 (Start) - (Control Panel) - (Hardware and Sound) - (Devices and Printers) Right click the printer driver, and select the (Printer properties).</p> <p>Windows Vista (Start) - (Control Panel) - (Hardware and Sound) - (Printer) Right click the printer driver, and select the (Properties).</p> <p>Windows XP (Start) - (Control Panel) - (Printers and Faxes) Right click the printer driver, and select the (Properties).</p> |

Using the APD

This chapter explains how to use the functions contained in the APD.

CAUTION

Administrator permission is required for property settings of the printer driver.

Application Printer Settings

The following explains the initial printer settings from the Windows application to the TM printer. Set the printer model and paper from the application you are to use. This is an example using WordPad. Run [All Programs] - [Accessories] - [WordPad] from the [Start] menu.

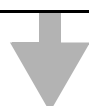
NOTE

When printing a device font in Microsoft Word, the following setting is necessary.

- For Word 2003 or earlier : From [Tools] - [Options] - [Compatibility], select "Microsoft Word 6.0/95" in [Recommended Options for] or make a check in "Use printer metrics to lay out document" in [Options].
- For Word 2007 : From [Word Options] - [Advanced] - [Compatibility Options for], select "Microsoft Word 6.0/95" or "Custom" in [Lay out this document as if created in], and make a check in "Use printer metrics to lay out document" in [Layout Options].

1. Printer driver specification

Select [File] - [Print...] to display the print dialog box. Select the printer driver you are to use. Press the [Apply] button, then press the [Cancel]. Return to WordPad screen.



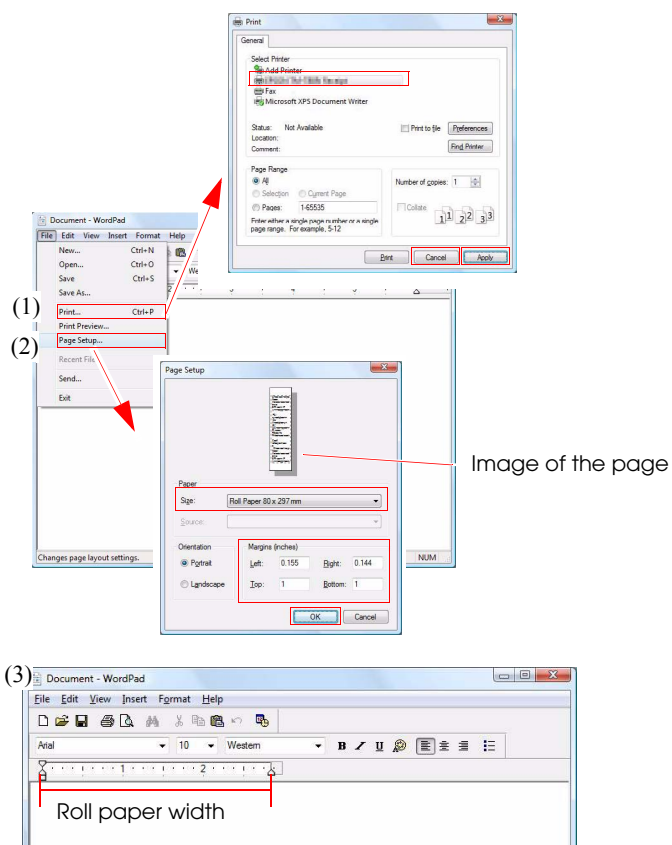
2. Page Setup

Select [File] - [Page Setup] to display the Page Setup dialog box. Select the paper you are to use. At this point the Page Setup illustration changes to roll paper. Set the margins, and then press the [OK] button.



3. Exit Settings

The paper width selected with Page Setup is applied to WordPad.



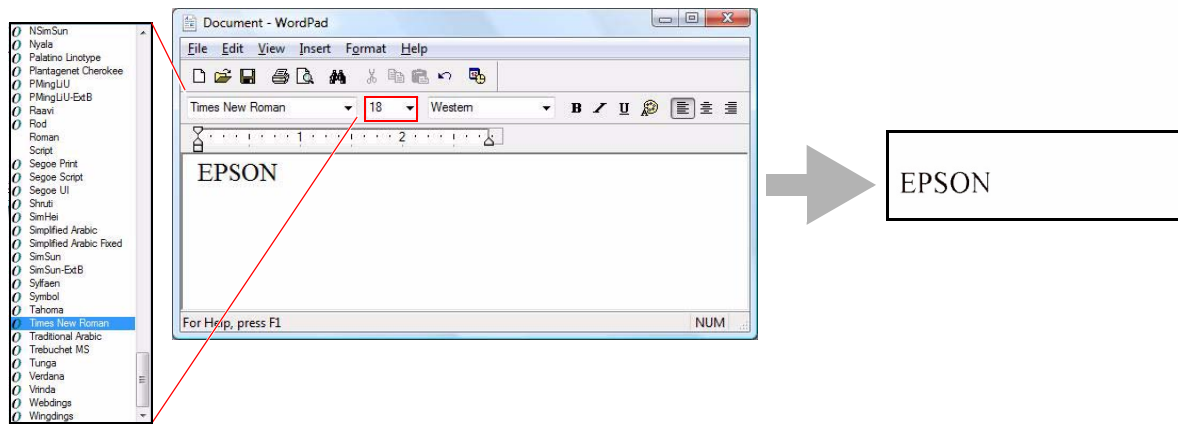
Character Printing (TrueType fonts)

Printing is performed with the TrueType fonts (Arial, Times New Roman, etc.) available with Windows. You can apply italic and other character modifications, and freely change the font size. You can also print almost exactly what you see on screen.

CAUTION

- You cannot obtain full text quality with TrueType fonts depending on TM printer model. In this case, specify device font. (See ["Character Printing \(Device Font\)"](#) on page 15.)
- When printing with a TrueType font, the data volume sent to the TM printer increases since the print image is expanded by the computer before sending to the printer. Due to this, when connected using the serial port, printing time is longer compared with other interfaces.

Specify TrueType font, Point and Style for print data.



Character Printing (Device Font)

Device Font is the font set built into the TM printer.
You can obtain text quality in line with the performance of the TM printer.
You can print text at a higher speed than TrueType font.
To print Device Font in a .NET environment, you must replace the font. See ["Device Font Printing in a .NET Environment" on page 25](#) for details.

Setting Device Font

When printing with Device Font, set the Device Font type.

Device Font Type

The xx after the font name specifies two digits, expressing the character size.
See the Technical Reference Guide for the TM printer you are using for a description of this setting. Also see the manual regarding the number of dots for each font.

- FontAxx FontBxx
- TIS11_3_FontAxx TIS11_3_FontBxx
TIS11_3_FontCxx TIS11_3_FontDxx
- TIS11_3_FontAxx TIS11_3_FontBxx
TIS11_3_FontCxx TIS11_3_FontDxx
- CTVN-3_30_FontAxx CTVN-3_30_FontBxx
- CTVN-3_31_FontAxx CTVN-3_31_FontBxx

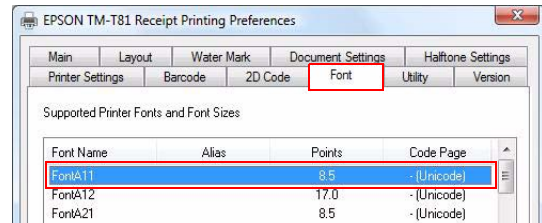
Device Font Size

Device Font prepares fonts for each character size. As with TrueType fonts, point size is not specified separately from the font; rather, character size is specified by selecting a font.
The following sizes are available with Device Font.

| Width \ Height | Standard | Double | Fourfold | Eightfold | | |
|----------------|----------|---------|----------|-----------|-----------------------|---------|
| Standard | FontA11 | FontA12 | | | Standard | FontA11 |
| Double | FontA21 | FontA22 | FontA24 | | Double height | FontA12 |
| Fourfold | | FontA42 | FontA44 | FontA48 | Double width | FontA21 |
| Eightfold | | | FontA84 | FontA88 | Double height / width | FontA22 |

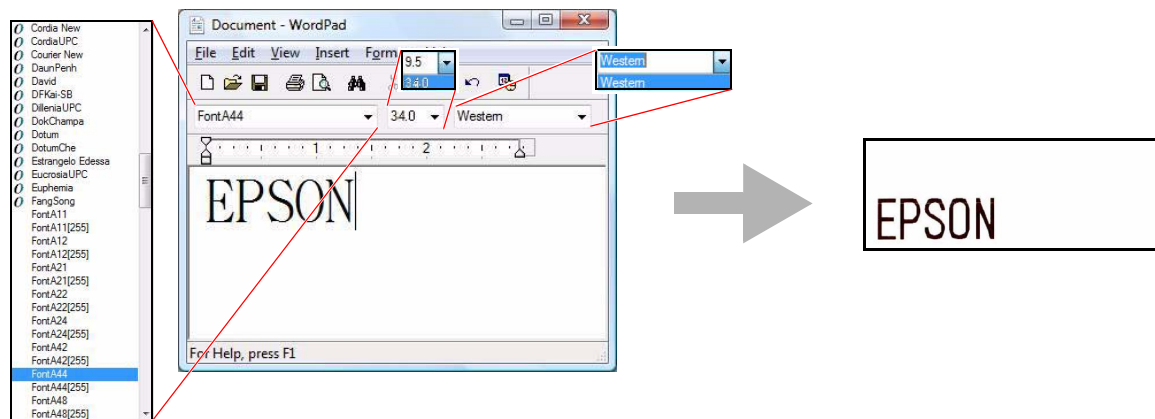
The Device Font Point varies with the TM printer. Also, Point is determined for every Device Font. Check with the Printer Settings - [Font] tab of the printer driver.

When printing Font A11 with TM-T81, specify 8.5 pt.



Printing Method

Specify Device Font, specified Point (check with [Font] tab) and language in print data.



CAUTION

- Not reflected in characters even when you specify bold/italic. The underline is printed but the position is offset.
- Printing is not possible when Device Font and Barcode(2D-Code) Font are arranged in one line.

NOTE

The character design and size displayed on the application screen are a little different from actual printing results.

Program

The following is an example program for reference.

```

Printer.Font.Charset = 0
`Font
Printer.Font.Name = "FontA44"
`Size
Printer.Font.Size = 34.0
`Printing text
Printer.Print "EPSON"

```

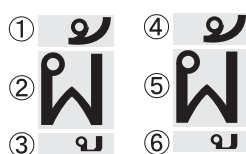

Character Printing (Thai Device Fonts)

Thai device fonts are available for printing Thai.

Compared to direct printing of TrueType fonts, these fonts make better and faster printing possible.

Configuration and Name of Thai Characters

The configuration and names of Thai characters are described below.



| Name | Data transmission order | Description |
|-------------|-------------------------|----------------------------------|
| Thai-1 Pass | ②→③→①→⑤→⑥→④ | Transmits data by the character. |
| Thai-3 Pass | ①→④→②→⑤→③→⑥ | Transmits data by the line. |

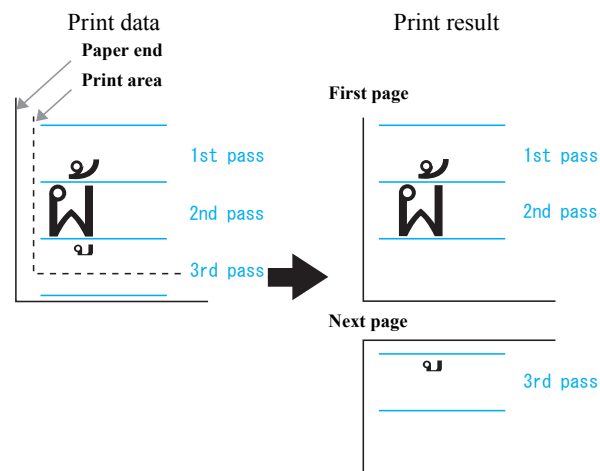
Selecting the Thai Device Fonts

Select the device font for the driver according to your environment.

| Environment | Data | Device Fonts | Feature |
|---------------------|-------------|---------------------|---|
| Windows application | Thai-1Pass | TIS11_3_FontA/B/C/D | Thai-1 Pass application Setting |
| | Thai-3Pass | FontA/B | Thai-3 Pass application Setting |
| Programming | Thai-1 Pass | TIS11_3_FontA/B/C/D | Program setting for creating character data with Thai-1 Pass. |
| | Thai-3 Pass | FontA/B | Program setting for creating character data with Thai-3 Pass Issue a command to end of line for saving line space. |

Cautions for Using the Thai Device Font

- Do not use another font in the same line.
- If a character does not fit in the print area of the paper, the rest of the character will be printed on the next page.



TIS11_3_FontA/B/C/Dxx

Do not use another font in a paragraph.

FontA/Bxx

When you use a font such as FontA11, if you specify the following control font before line feeding, the amount of line feeding will be reduced and the line spacing will be smaller.

| Control Font | Description |
|--------------|------------------------|
| 8 | 1/16-inch line spacing |
| 9 | 1/8-inch line spacing |

Replacing device fonts

When you use a device font in a .NET Framework environment, replace a TrueType font with the device font. The replaceable TrueType fonts are Thai TrueType fonts and AngsanaUPC is recommended. Replacing a TrueType font other than Thai with a Thai device font is not possible. See ["Device Font Printing in a .NET Environment" on page 25](#) for details.

Printing a Barcode

APD has Barcode font built in. Therefore, you can print Barcode even if you have not created Barcode on the application side.

NOTE

When used in combination with Rotation, set a slow Printing Speed with the [Document Settings] tab. When the print speed is too fast, the barcode may not be read.

Barcode font lets you register the barcode type and size as properties. Up to eight types of barcode (Barcode 1 ~ 8) can be registered using the APD.

Barcode font setting

Select the [Barcode] tab from Printing Preferences.

(Barcode) tab

Font Name

Points

Alias

Barcode type

Open the Advanced settings screen

Font Name Barcode1

65.0 Points

Alias

Select this font size in the application. For more information about programming, see the sample programs or the manual.

Barcode1

Type UPCA

Settings

Advanced settings

Option Setting

Composite Off

Element Width 3 Dots

Element Height 162 Dots

HRI Position Do not print

HRI Font FontA

Rotation Normal

Hex Input Mode Off

Add Quiet Zone Off

OK Cancel Apply Help

Element width
(width of the thin lines in dots)

Element height
(height of the thin lines in dots)

HRI characters

Barcode1

UPCA

Composite

Element Width 3 [2-6] Dots

Element Height 162 [1-255] Dots 22.8 mm

HRI Position Do not print

HRI Font FontA

Options

Rotation Normal

Hex Input Mode

Add Quiet Zone

Test Printing

Test Data 012345678905

Run

OK Cancel

Element

HRI characters

Rotation

Quiet Zone

Make the following settings. See "Barcode" on page 81 for details.

| Setting | Description |
|-----------|---|
| Font Name | You can set Barcode font for up to 8 barcode types (Barcodes 1 ~ 8). When printing through an application, specify the font name or the alias name. |
| Points | The barcode font size is displayed. When printing through an application, specify this value. |

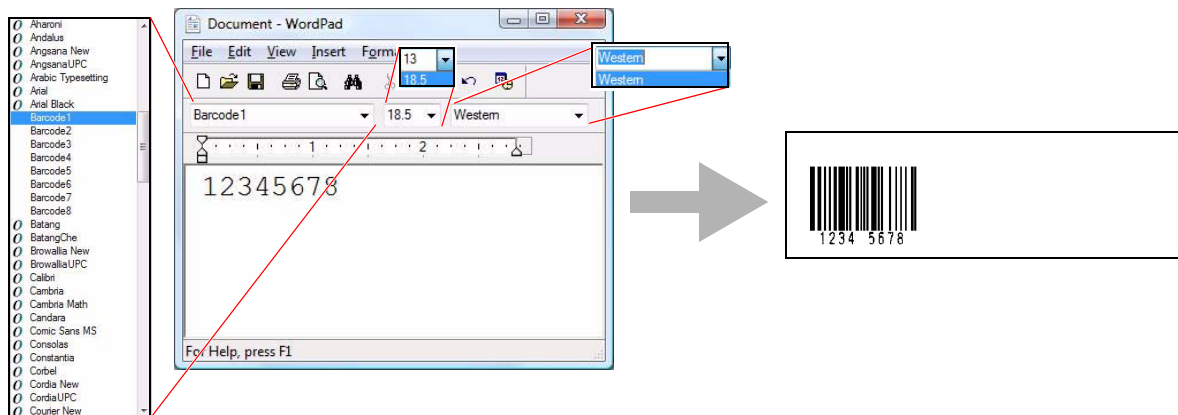
| Setting | Description |
|----------------|--|
| Alias | You can make optional settings. You can specify Alias during programming. |
| Barcode type | Configures the Barcode type (UPC-A, ITF,etc) |
| Element | Determines the Barcode size. Specifies the finest Element width and height. Units are the smallest dot of the TM printer. This result determines the Barcode font Point. |
| HRI characters | Sets with/without HRI characters, position and font. |
| Rotation | Sets whether to independently rotate Barcode. |
| Hex Input Mode | Allows the Barcode characters to be entered in binary. |
| Add Quiet Zone | The blank margin on either side of a Barcode required in order to read the Barcode. |

NOTE

When Rotate is set with the [Layout] tab, the printing direction of the barcode matches [Layout] tab Rotate and the Rotation of [Barcode]-[Advanced settings] printing direction.
 Ex: When specifying [Rotate by 90 degrees] with [Layout] Rotate and [Rotate by 90 degrees] with [Barcode] Rotation, the printing direction is turned through 180 degrees.

Printing Method

Specify Barcode Font, specified Point (check with [Barcode] tab) and language in print data.



CAUTION

Barcode Font Points determined. Check with Printing Preferences - [Barcode]. When specifying a value other than this, the Barcode is not printed.

NOTE

The character design and size displayed on the application screen are a little different from actual printing results.

Program

The following is an example program for reference.

```
-----  
Printer.Font.Charset = 0  
`Size  
Printer.Font.Size = 18.5  
`Font  
Printer.Font.Name = "Barcode1"  
`Printing text  
Printer.Print "12345678"  
-----
```

Printing a 2D-Code

APD has a 2D-Code font. Therefore, you can print 2D-Code without creating 2D-Code on the application side.



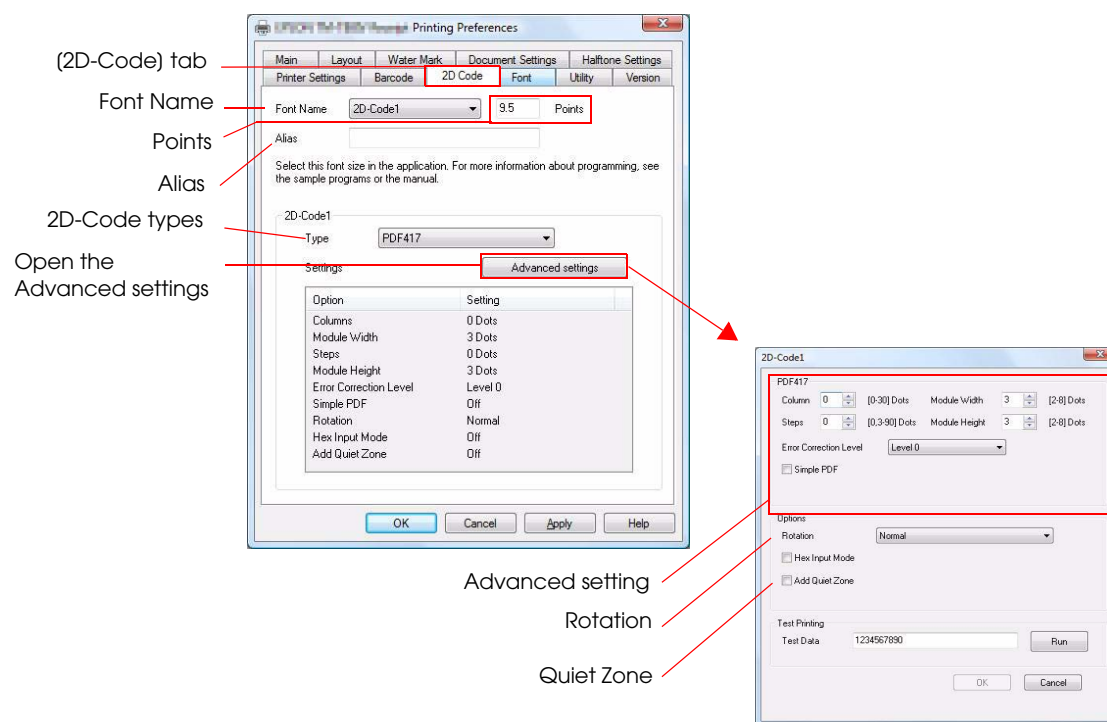
Set a slow Printing Speed with the [Document Settings] tab. When the print speed is too fast, the symbols may not be read.

The 2D-Code font allows registration of 2D-Code type and size properties.

Up to eight types (2D-Code 1 ~ 8) of setting can be registered using the APD. You can make fine settings of 2D-Code at one time, and also easily change the settings.

Setting the 2D-Code Font

Select the [2D-Code] tab from Printing Preferences.



Make the following settings. See "2D-Code" on page 84 for details.

| Setting | Description |
|-----------|---|
| Font Name | You can set the 2D-Code font from the 8 types of 2D-Code(1 ~ 8). When printing through an application, specify the font name or the alias name. |
| Points | The 2D-Code font size is displayed. When printing through an application, specify this value. |

| Setting | Description |
|------------------|---|
| Alias | You can put a name to 2-dimensional symbol fonts. Through an application, you can specify a font by this alias name instead of specifying 2-dimensional symbol font itself. |
| Barcode type | Sets the 2D-Code type. (PDF417, QRCode) |
| Advanced setting | Sets the 2D-Code size and Error Correction Level, etc. Setting contents differ with the 2D-Code type. |
| Rotation | Sets whether to independently rotate 2D-Code. |
| Hex Input Mode | Allows the 2D-Code characters to be entered in binary. |
| Add Quiet Zone | Check this box to add a quiet zone, the blank margin on either side of a 2D-Code required to be properly read. |

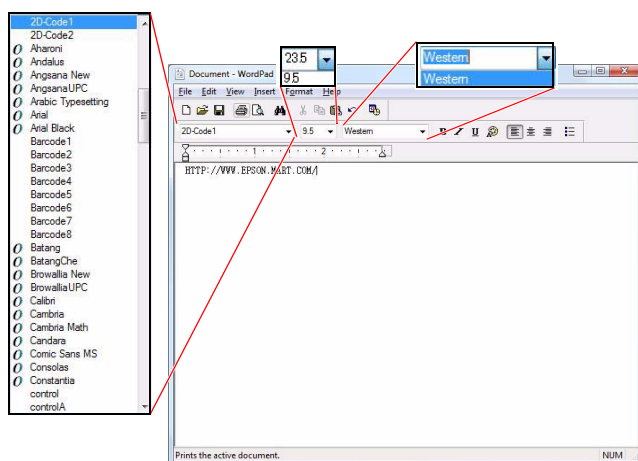
NOTE

When Rotate is set with the [Layout] tab, the printing direction of the barcode matches [Layout] tab Rotate and the Rotation of [Barcode]-[Advanced settings] printing direction.

Ex: When specifying [Rotate by 90 degrees] with [Layout] Rotate and [Rotate by 90 degrees] with [2D-Code] Rotation, the printing direction is turned through 180 degrees.

Printing Method

Specify 2D-Code Font, specified Point (check with [2D-Code] tab) and language in print data.

**NOTE**

2D-Code Font Points determined. Check with Printing Preferences - [2D-Code]. When specifying a value other than this, the 2D-Code is not printed.

Program

The following is an example program for reference.

```
-----  
Printer.Font.Charset = 0  
`Size  
Printer.Font.Size = 9.5  
`Font  
Printer.Font.Name = "2D-Code1"  
`Printing text  
Printer.Print "http://www.epson.mart.com/"  
-----
```

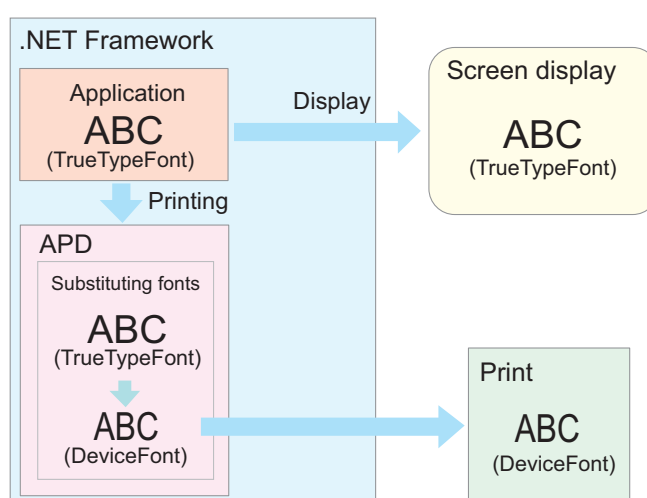

Device Font Printing in a .NET Environment

.NET Framework supports only TrueType and OpenType fonts. Therefore, the printer's device fonts cannot be used. In the APD, therefore, a font substitution function is provided to allow you to use device fonts even with .NET Framework.

This function is not only useful in a .NET Framework environment: it also allows you to use the device fonts from an application that only supports TrueType fonts.

Substituting Fonts

The APD font substitution function replaces a TrueType font with a device font. By specifying a device font to be used as a substitute for a given TrueType font, printing can be done using a device font. True Type fonts are used for the application's screen display, but they are substituted by the device font when printed.



For TrueType fonts not available for the substitution, see the table below.

| TrueType fonts not available for the substitution | | | |
|---|----------|-------------|-------------|
| Marlett | Symbol | MS Outlook | Wingdings 3 |
| Wingdings | Webdings | Wingdings 2 | |

NOTE

Images on an application screen cannot be printed as it is because device fonts differ from TrueType fonts in characteristics such as the aspect ratio. You need to confirm print results in advance.

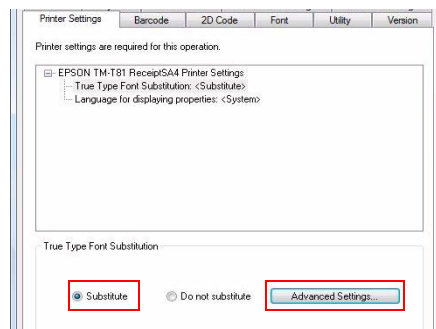
CAUTION

Device fonts whose horizontal/vertical ratio is different, such as FontA 12/21, cannot be printed.

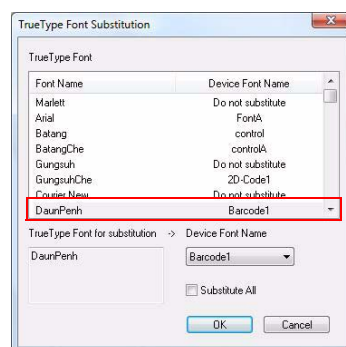
Font Substitution Settings

Make the Substitution setting as follows. See ["TrueType Font Substitution" on page 78](#) for details.

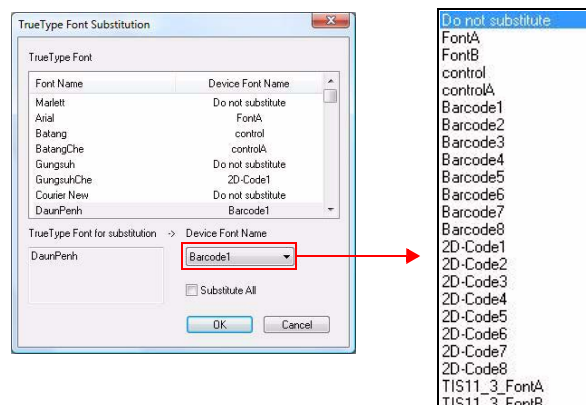
- 1 Select the Printer Settings tab from Printing Preferences.
- 2 Select (True Type Font Substitution) from the selection items.
- 3 Select (Substitute) and click the (Advanced Settings) button.



- 4 The TrueType Font Substitution screen is displayed. Select a TrueType font to be substituted.



- 5 From the pull down list, select the device font with which you substitute the TrueType font.



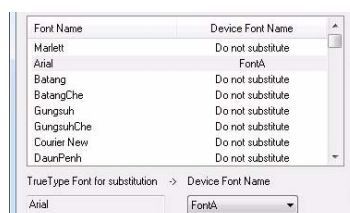
Printing Using a Device Font

Select the TrueType font to be substituted.

That TrueType font for which substitution has been specified will always be output as the device font. Otherwise, therefore, always select another TrueType font.

Font Substitution Settings

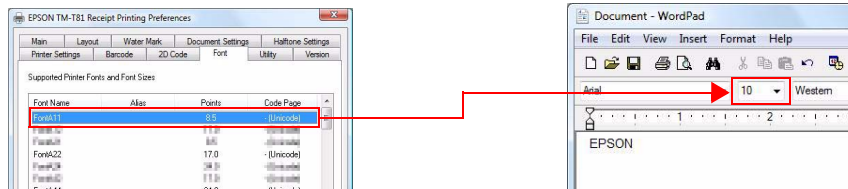
Make the [Printer Settings] - TrueType Font Substitution settings. The example specifies Arial for font substitution. (See ["Substituting Fonts" on page 25.](#))



For the print data, specify a TrueType font and size.
(Specify the size of the device font using that of the TrueType font.)

Specify the font size by adding 1 point to the size in the [Font] tab and dropping the fractional part.

Example: If the device font size is 9.5pt, specify 10.0pt.



Example:
If you specify "39.0," "FontA44" is specified. If you specify "10.0," "FontA11" is specified.

Note:

- If characters does not fit in one line and are printed on the next line, specify a smaller point size for the TrueType font.
- Only device fonts whose vertical/horizontal ratio is same, such as FontA11/22, can be printed.
- Smaller fonts whose point sizes are smaller than that of the smallest device font (example: FontA11) cannot be printed.
- If a point size between those of FontA11 and FontA22 is specified for the point size of the TrueType font, the smaller device font will be printed.

Example: If Arial 12 point is specified with the TM-T88IV, FontA11 will be printed.

Print

You need to confirm print results with your application in advance.

NOTE

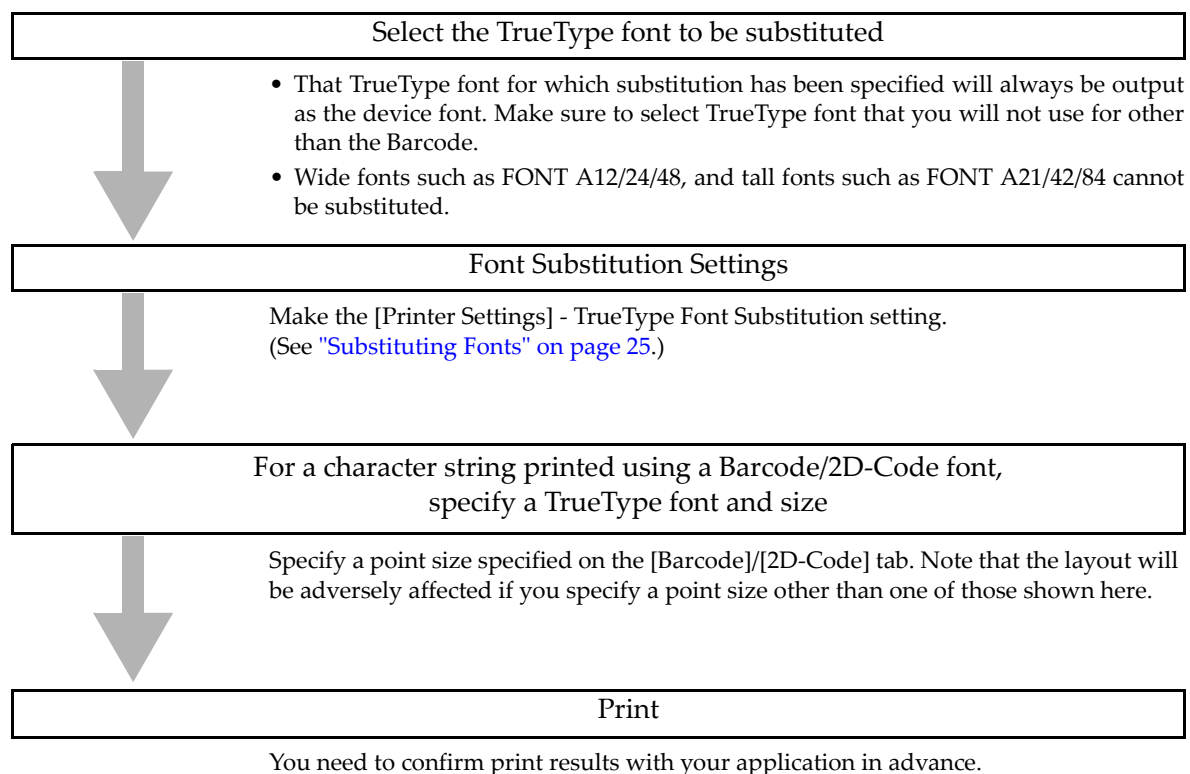
Even if you specify bold or italic font settings to the text in TrueType font, it will not be reflected in the printings. The underline is printed but the position is offset.

Program

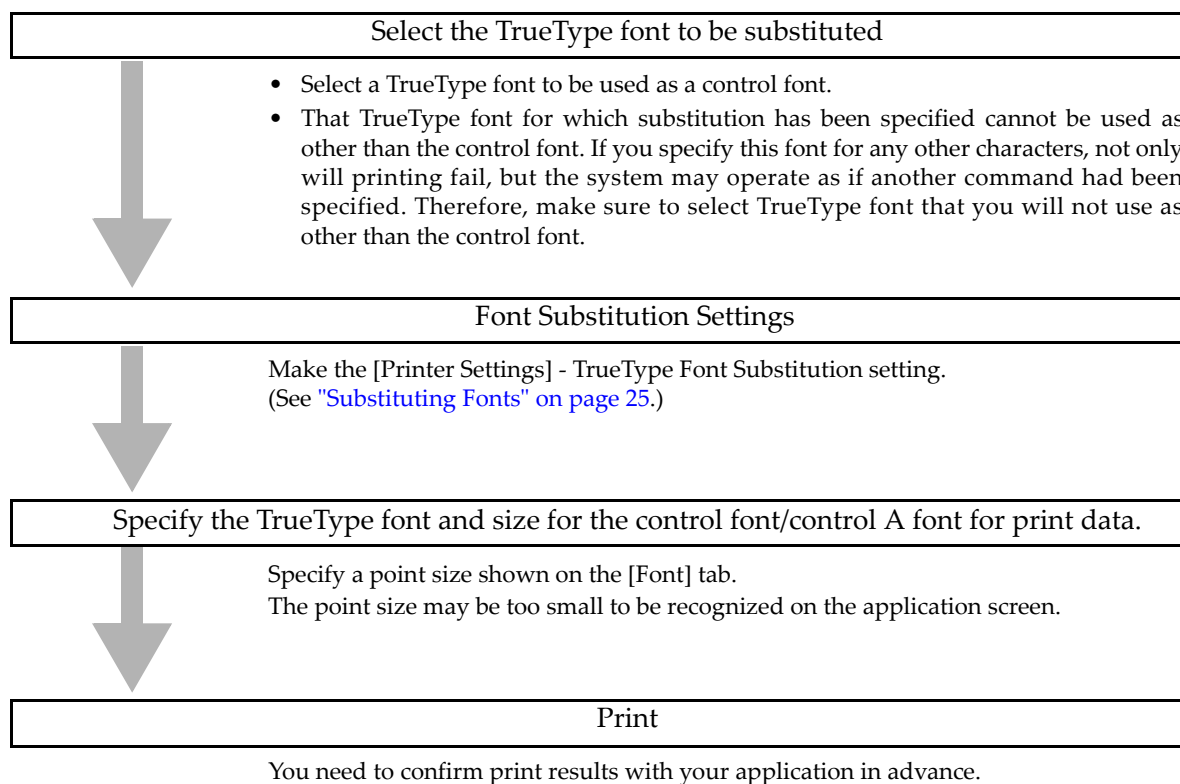
The following is an example program for reference.

```
-----
Printer.Font.Charset = 0
`Font
Printer.Font.Name = "Arial"
`Size
Printer.Font.Size = 34.5
`Printing text
Printer.Print "EPSON"
-----
```

Printing Barcodes/2D-Code Fonts

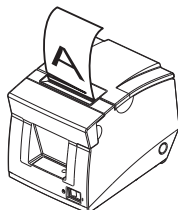


Controlling the TM Printer: Control Font/Control A Font

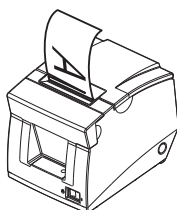


Rotated Printing

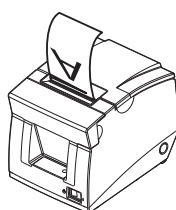
You can rotate data for printing. When using a TM printer oriented vertically, printing with 180° rotation (inverted printing) enables printing with an orientation that is easy for customers to see. Otherwise, when you want to print characters horizontally, for receipts, etc., you can make the rotation setting on the printer driver side.



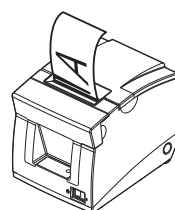
Normal



90° rotation



180° rotation

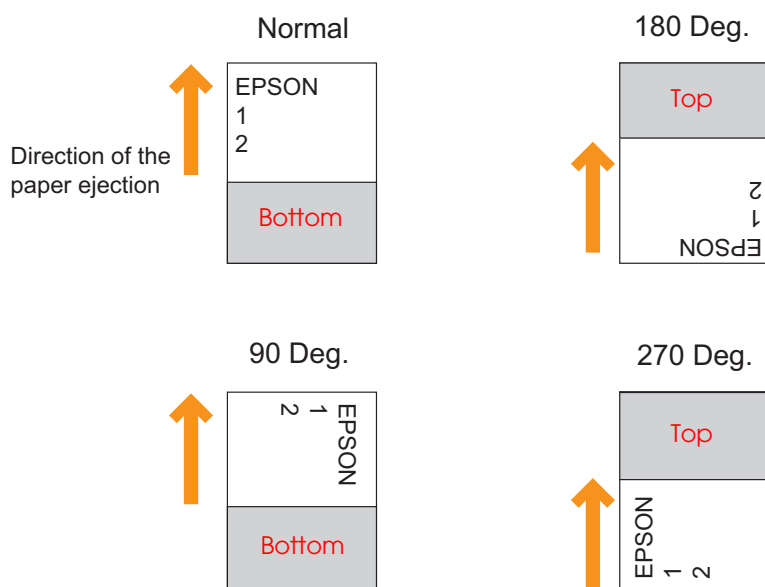


270° rotation

When setting rotated printing, "paper conservation" is enabled automatically.

- Top: Paper can be saved because the top blank is not printed.
- Bottom: Paper can be saved because the bottom blank is not printed.

Printing direction and margin conservation have the following relations.

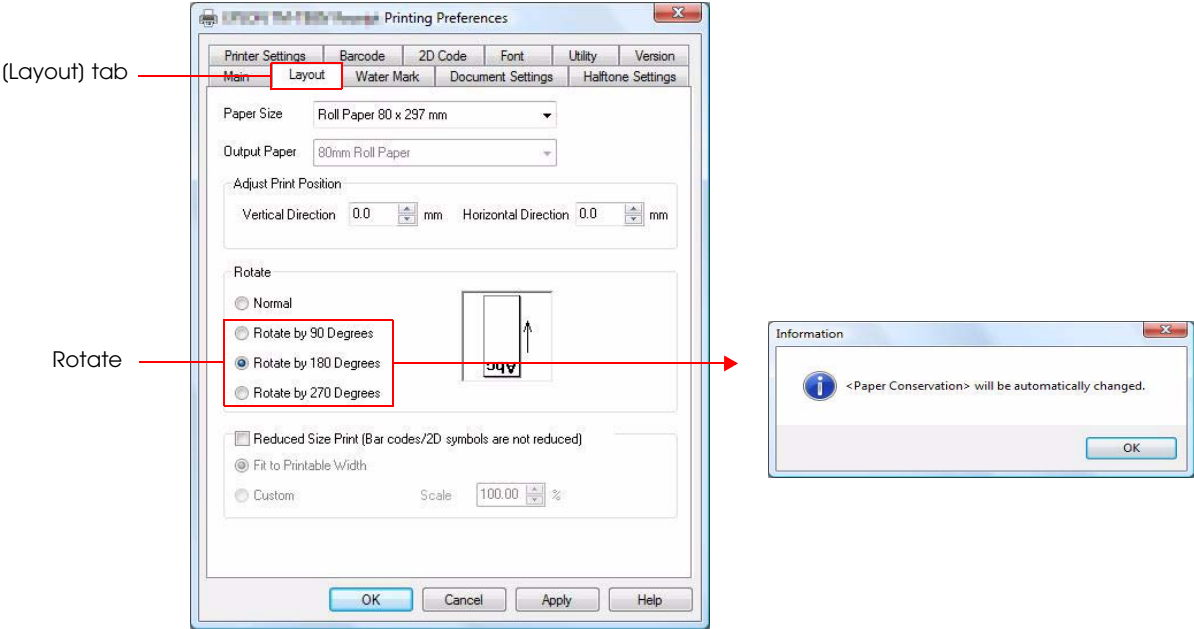


NOTE

See "Paper Conservation" on page 65 for margin setting.

Rotate Printing Settings

Select the [Layout] tab from Printing Preferences.



Make the following settings. See ["Layout" on page 60](#) for details.

| Setting | Description |
|---------|---|
| Rotate | Select the printing orientation you want. With settings other than Normal, all text is printed as a graphic image, and Paper Conservation is changed automatically. When the Information screen is displayed, click "OK". |

CAUTION

- When the printing orientation setting is other than standard, since [Print all text as graphics] under Document Settings is "Yes", you cannot use Device Font, Control Font (logo printing using NV memory, etc.) or ControlA Font.
- Do not use with your own independently developed application's rotated printing function. Use only one or the other rotated printing function.

Background printing

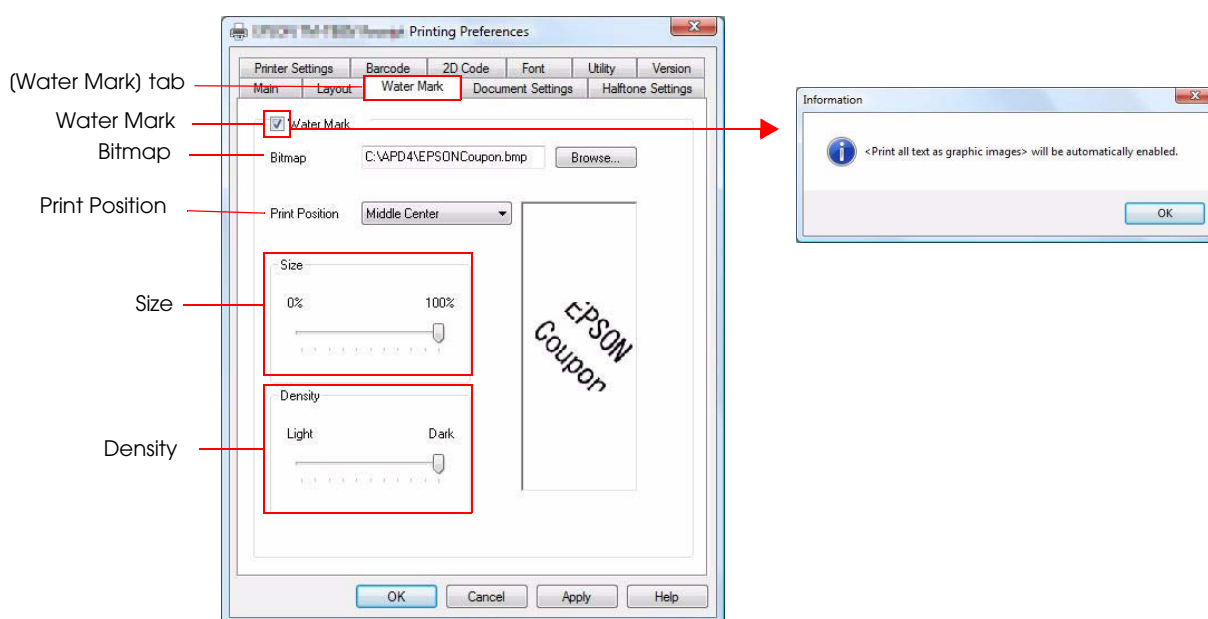
Use Water Mark to print background. A bitmap file is necessary for Water Mark setting.

CAUTION

- You may not be able to print a Water Mark depending on the application.
- When the printing orientation setting is other than standard, since [Print all text as graphics] under Document Settings is "Yes" you cannot use Device Font, Control Font control (logo printing using NV memory, etc.) or ControlA Font.
- Since a large volume of data is sent to the TM printer for Water Mark printing, in the case of serial connection printing time is longer compared with other interfaces.
- When printing in the shared printer environment, save the data file in a folder accessible from the shared environment.

Water Mark setting

Select the [Water Mark] tab from Printing Preferences.



Make the following settings. See ["Water Mark" on page 63](#) for details.

| Setting | Description |
|----------------|--|
| Water Mark | Check to print Water Mark. When checked, (Print all text as graphics) under Document Settings is automatically set to "Yes". |
| Bitmap | Specifies the background bitmap data file. |
| Print Position | Make the following settings. |
| Size | Configures the size of the Water Mark. |
| Density | Configures the density of the Water Mark. |

Printing a Logo

Use the following method to print graphics.

| Method | Features |
|--|---|
| Print logo data on the application screen | Large data volume, printing is slow. |
| Specify logo data in the printer driver for printing | Slow, because file is read each time for printing. |
| Register bitmap in TM printer for printing | Data volume is small, therefore you can print fast. |

The following explains how to register a bitmap in the TM printer and print. Method that applies the bitmap of a fixed format such as a store logo.

CAUTION

When registering a bitmap file in the shared printer environment, save the data file in a folder accessible from the shared environment.

Bitmap registration

Register the bitmap data in the TM printer's NV (Non Volatile) memory with the TM Flash Logo Setup Utility. This memory retains its data even when the TM printer is switched off.

For more details, see ["TM Flash Logo Setup Utility Ver.3" on page 91](#).

CAUTION

You cannot register bitmap in a TM printer unless it has NV (Non Volatile) memory.

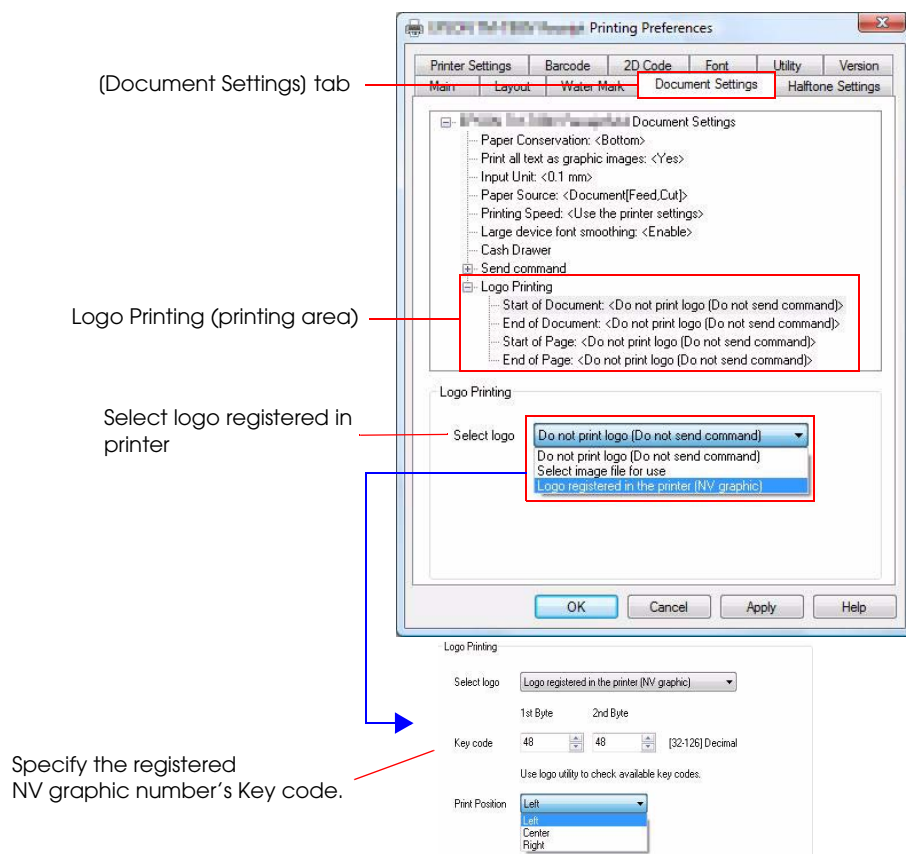
Logo printing

The following method is for printing logo registered in a TM printer.

| Method | Features |
|-----------------------------|---|
| Setting by printer driver | Prints the logo in a document or before and after a page. |
| Specifying by Control Font. | Specifies control font at the position for logo printing. |

Setting by printer driver for printing

Select the [Document Settings] tab from Printing Preferences.



Make the following settings. See "Logo Printing" on page 75 for details.

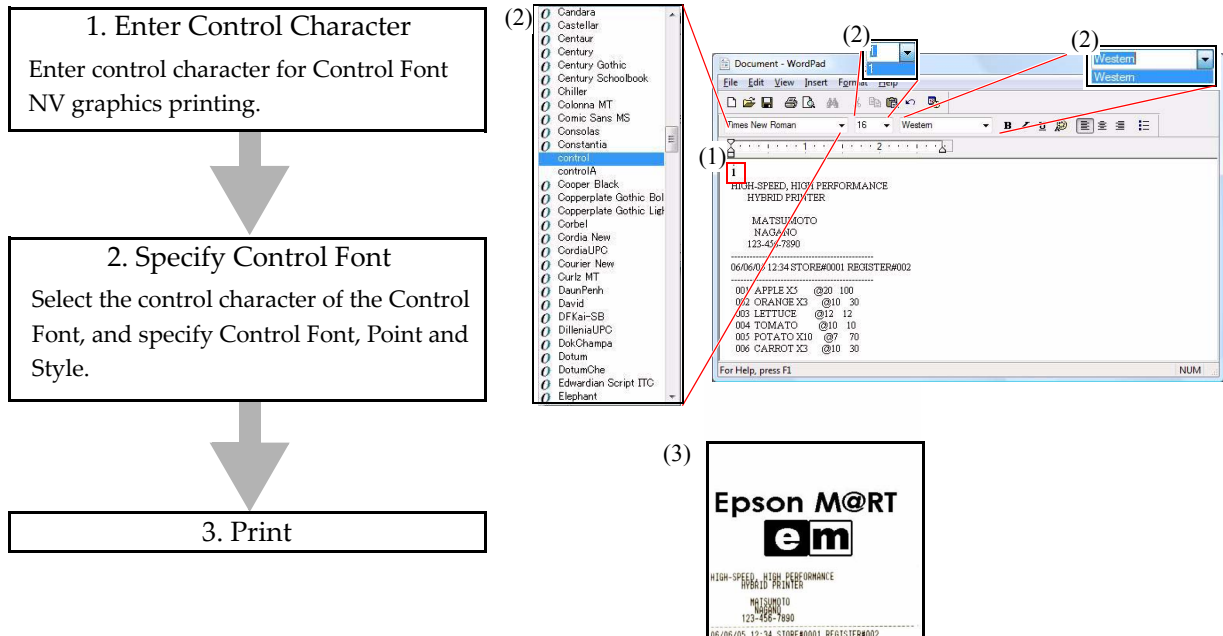
| Setting | Description |
|-------------------------------------|--|
| Logo Printing (printing area) | Specify an area for a logo printing (before or after a document or each page.) |
| Print Position | Specify a logo print position. Select Left, Center, or Right. |
| Specifying the bitmap to print | Select whether to use the logo registered in the TM printer or to specify and use an image file. |
| Specify logo registered in printer* | Specify by key code the logo registered in the TM printer's NV memory. |

* The Key code and graphic in the NV memory for printing are as follows.

| NV graphics number | Key code | |
|--------------------|----------|----------|
| | 1st byte | 2nd byte |
| NV graphics 0 | 48 | 48 |
| NV graphics 1 | 48 | 49 |
| NV graphics 2 | 48 | 50 |
| NV graphics 3 | 48 | 51 |
| NV graphics 4 | 48 | 52 |

Specify Control Font to print

Bitmap is printed using Control Font.



Program

The following is an example program for reference.

```

Printer.Font.Charset = 0
`Font
Printer.Font.Name = "control"
`Size
Printer.Font.Size = 1
`Printing text
Printer.Print "i"

```

Paper Feed and Paper Cut

There are two methods for controlling the paper cut.

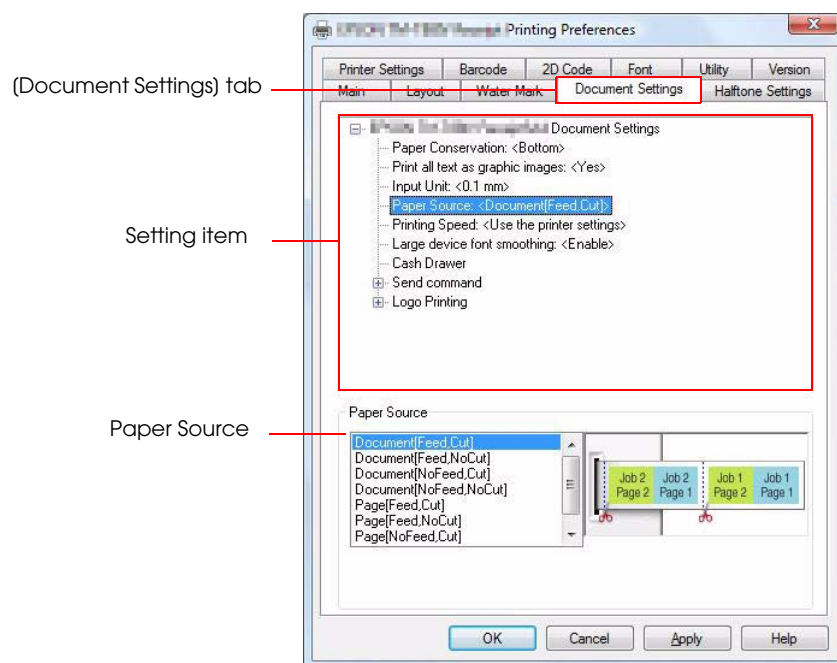
- Configure the APD to feed and cut the paper automatically at the end of each printing.
This method is valid even when [Print all text as graphics image] is set.
- Cut the paper using Control Font in the program.

CAUTION

When using Control Font, you cannot use it in combination with a <Print all text as graphics image> setting such as Rotated Printing/Water Mark/Scale-down Printing.

Setting paper cut with the printer driver

Select the [Document Settings] tab from Printing Preferences.



Make the following settings. See ["Paper Source" on page 68](#) for details.

| Setting | Description |
|--------------|--|
| Setting item | Select Paper Source |
| Paper Source | Select whether to feed paper per job (document) or page, and whether to cut paper with the auto-cutter or not. |

Making this setting controls paper feed and paper cut when printing a document.

Specifying Control Font and performing paper cut in programming.

The following is an example program for reference.

```
-----  
Printer.Font.Charset = 0  
`Font  
Printer.Font.Name = "control"  
`Size  
Printer.Font.Size = 1  
`Printing text  
Printer.Print "P"  
-----
```

Drawer Control

The methods for controlling the drawer are as follows.

- Make the drawer open automatically by configuring the printer driver.
- Open the drawer from the application using the Open Drawer Control Font.

CAUTION

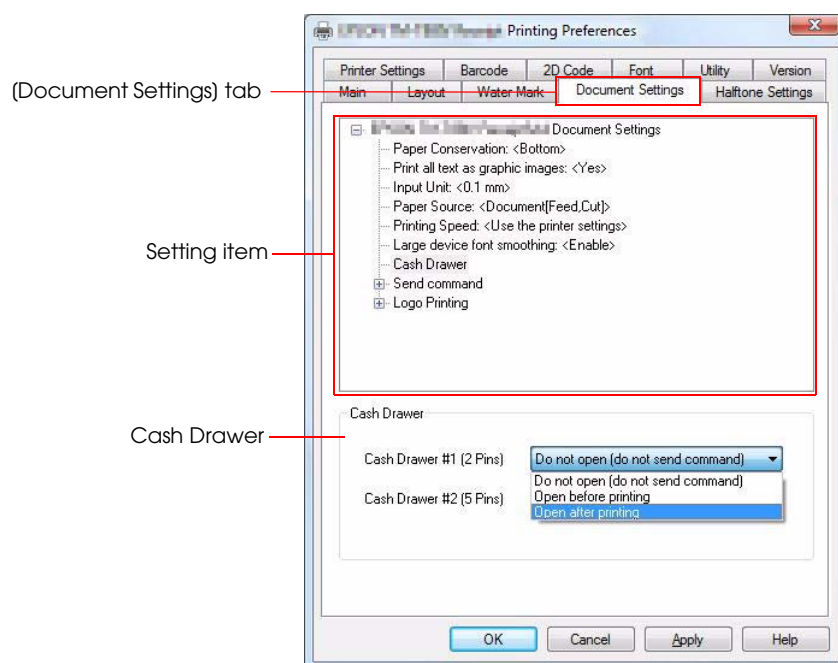
When using Control Font, you cannot use it in combination with the <Print all text as graphics image> setting such as Rotated Printing/Water Mark/Scale-down Printing.

NOTE

For closing the drawer, push manually.

Opening Drawer with printer driver setting

Select the [Document Settings] tab from Printing Preferences.



Make the following settings. See ["Cash drawer" on page 73](#) for details.

| Setting | Description |
|--------------|--|
| Setting item | Selecting Cash drawer |
| Cash Drawer | With a drawer provided by Epson, if you set "Open after printing" for Cash drawer #2 (5pins), the drawer opens after printing. |

Opening Drawer by Control Font

Use the Open drawer Control Font to open Drawer.

NOTE

Set "Do not open (do not send command)" for Cash Drawer in Document Settings.

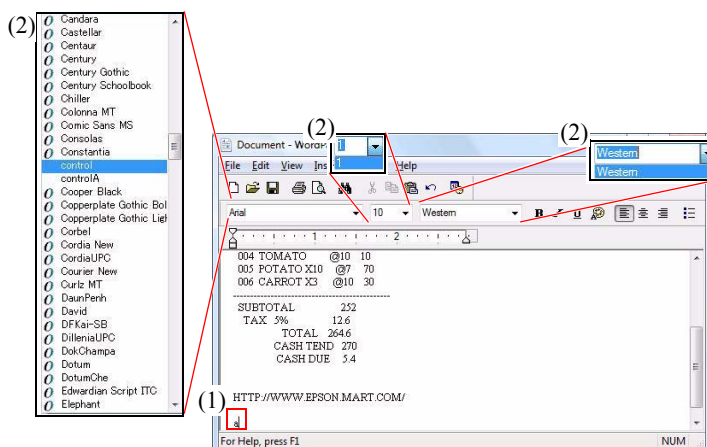
1. Enter Control Character
Enter control character of the Open drawer Control Font in the position you want the drawer to open.



2. Specify Control Font
Select the control character of the Control Font, and specify Control Font, Point and Style.



3. Print
Drawer opens.



Program

The following is an example program for reference.

```
-----
Printer.Font.Charset = 0
`Font
Printer.Font.Name = "control"
`Size
Printer.Font.Size = 1
`Printing text
Printer.Print "a"
-----
```

How to Use ControlA Font

With the ControlA Font, ESC/POS commands can be assigned to the selected characters, and on printing the assigned characters can be executed as defined ESC/POS commands.

NOTE

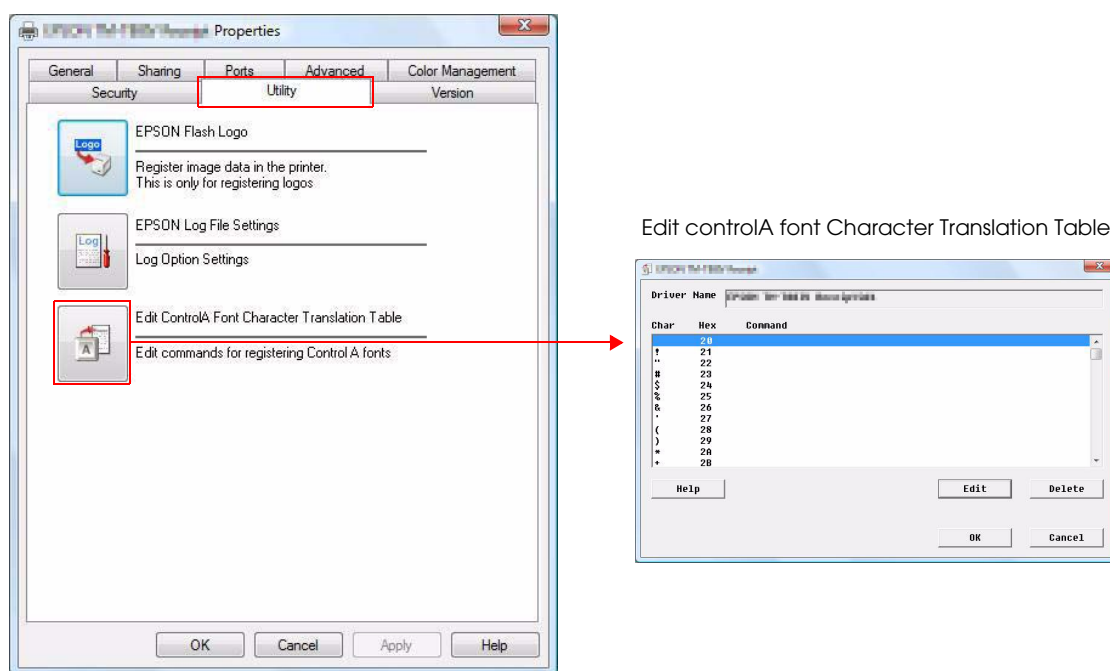
ESC/POS commands are not open to the public. Ask your sales representative for more information.

CAUTION

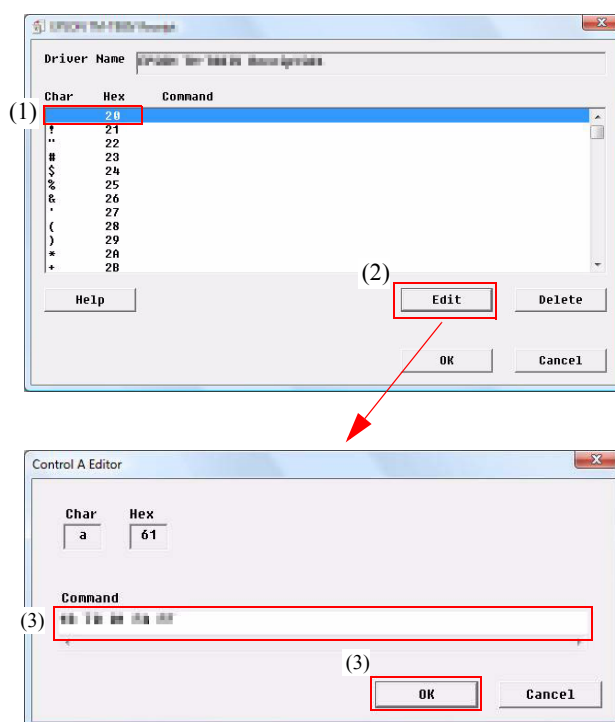
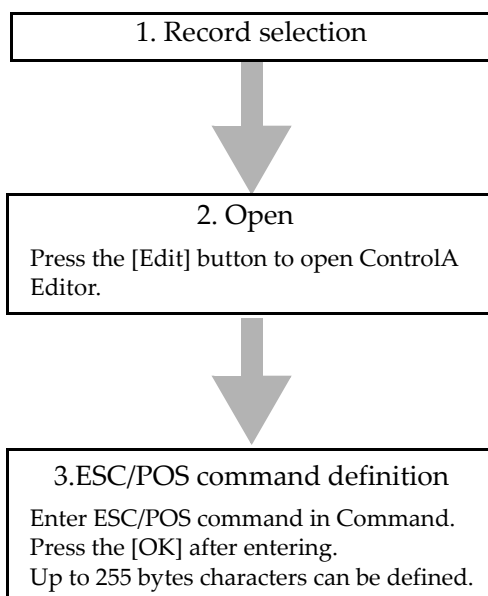
When using ControlA Font, you cannot use it in combination with the <Print all text as graphics image> setting such as Rotated Printing/Water Mark/Scale-down Printing.

Setting ControlA Font

Select [Utility] from Properties, and then press the [Edit controlA font Character Translation Table] button. Edit controlA font character translation table is displayed.

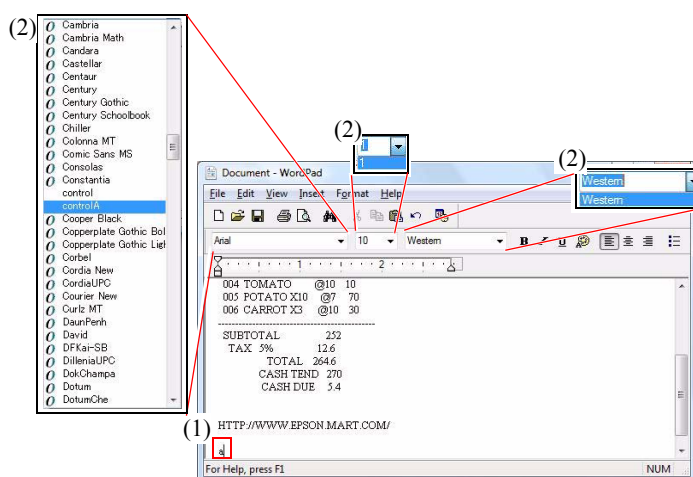
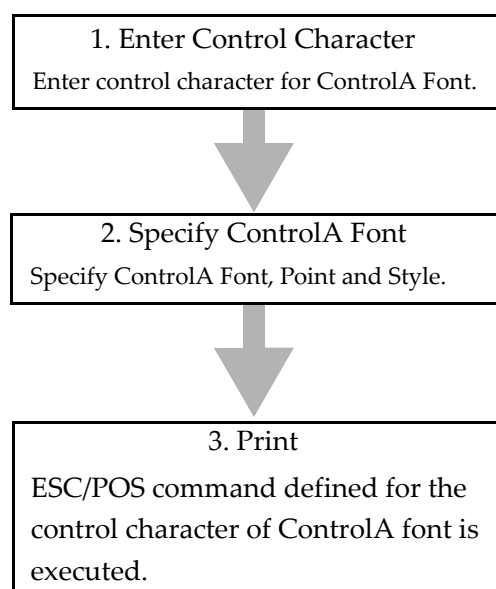


Define ESC/POS commands in the record you want to define.



Using ControlA Font

Use the defined ControlA Font.



Program

The following is an example program for reference.

```
-----  
Printer.Font.Charset = 0  
`Font  
Printer.Font.Name = "controlA"  
`Size  
Printer.Font.Size = 1  
`Printing text  
Printer.Print "a"  
-----
```

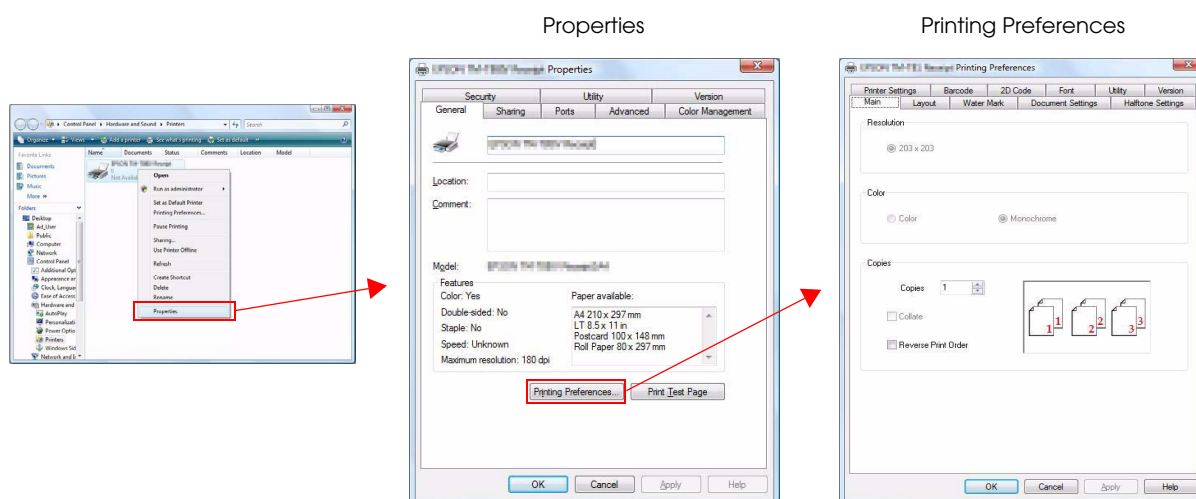
Reference

This chapter describes the APD settings.

CAUTION

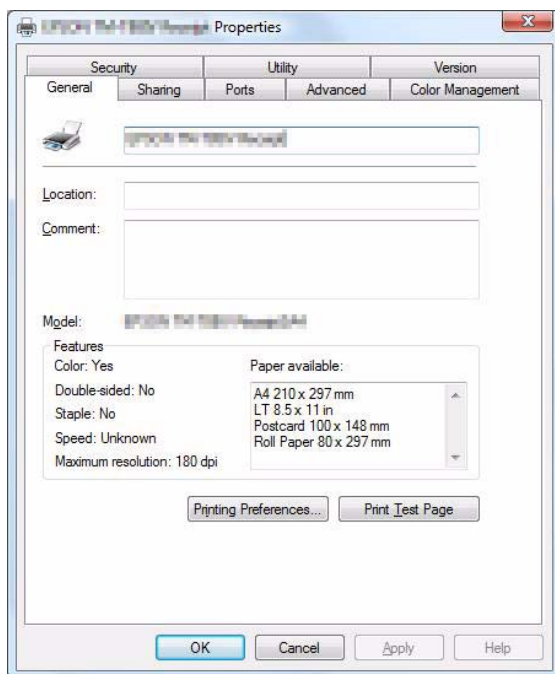
Administrator permission is required for property settings of the printer driver.

To open the setting screen of the printer driver Properties, right click the printer driver from [Start] - [Control Panel] - [Printers] and select [Properties] ([Reference page of other OS.](#)). Select the [General] tab on the Properties screen and click the [Printing Preferences...] button to open the Printing Preference screen.



Properties

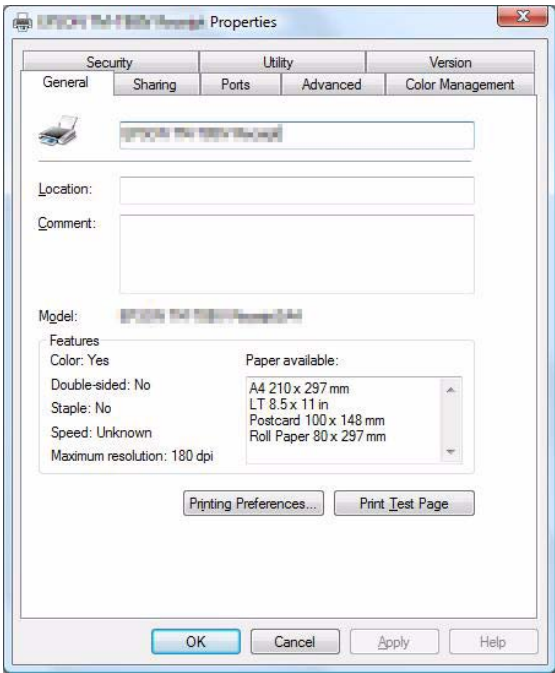
The following settings are available in the Property.



| Tab | Description |
|------------------|---|
| General | Configures printer name and printing preference, or makes a test print. |
| Sharing | Configures settings for sharing the printer. |
| Ports | Configures ports settings. |
| Advanced | Configures detailed settings for printing. |
| Color Management | Configures color management settings. |
| Security | Configures Windows security setting. |
| Utility | Configures Log File and ControlA font settings. |
| Version | Displays version information. |

General

Allows you to check/change the printer name, check the print settings, and make a test print (Print Test Page).



| Setting | Description |
|-------------------------|--|
| Printer Name | Displays the printer driver name. |
| Location | Accepts the printer location to be input. |
| Comment | Accepts comments about the printer driver to be input. |
| Model | Displays the driver name of the TM printer. |
| Features | Displays functions and papers available with the TM printer. |
| Printing Preferences... | Displays the Printing Preferences screen. |
| Print Test Page | Prints the Windows test page. |

Sharing

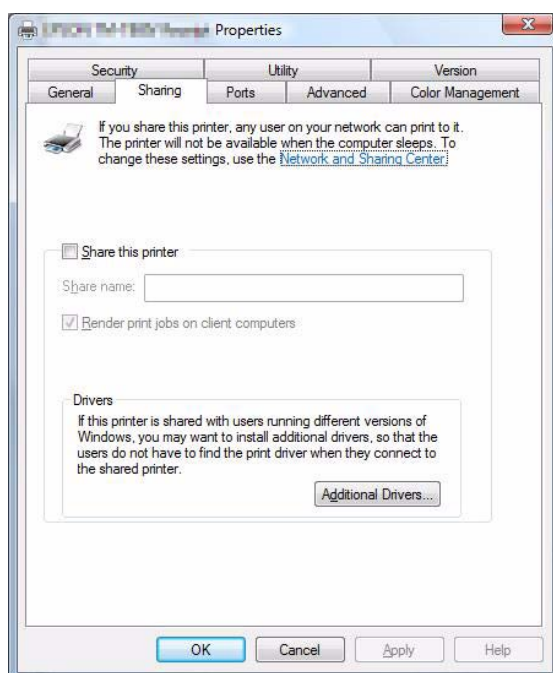
Allows you to configure the settings for sharing the printer.

CAUTION

Printer sharing through a print server is not supported.

NOTE

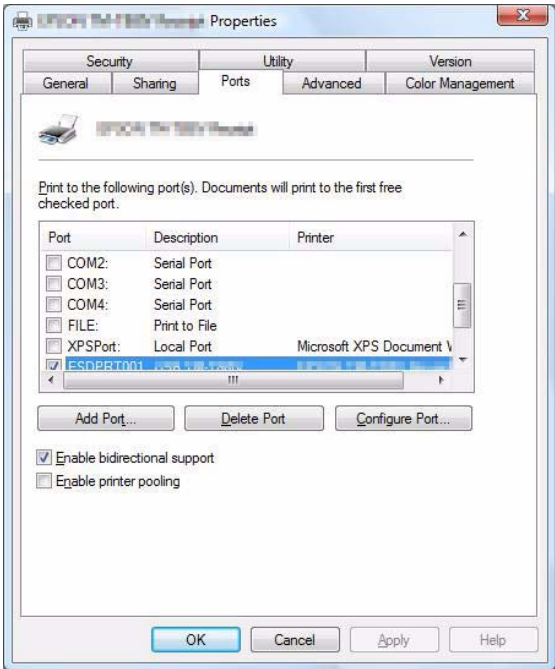
In Windows 7 / Vista, elevation of UAC is required.



| Setting | Description |
|------------------------|--|
| Change sharing options | Check this box when a printer is to be shared. |
| Share this printer | When this box is checked, network users can access a printer connected to this computer. |
| Share name | Specifies the name of a shared printer. |

Ports

Allows you to configure Epson Port settings.



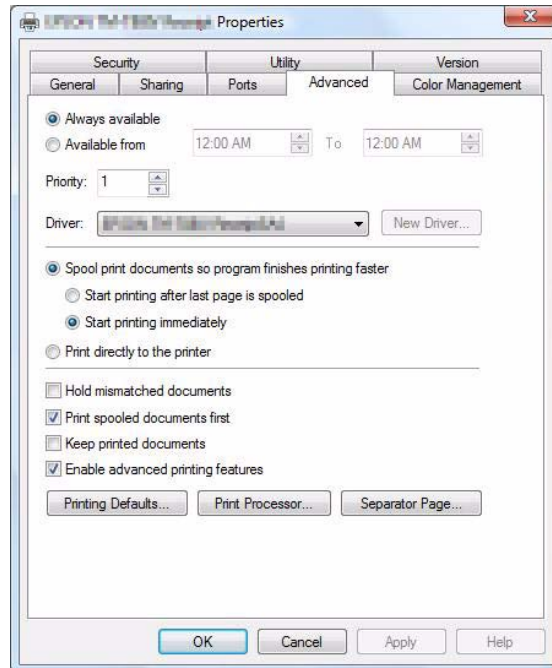
| Setting | Description |
|------------------------------|--|
| Add Port... | Creates a new Epson Port. |
| Delete Port | Deletes an Epson Port. |
| Configure Port... | Configures an Epson Port. |
| Enable bidirectional support | Do not uncheck. The APD will become unusable. |
| Enable printer pooling | Enables printing to two or more identical print devices through one logical printer. |

CAUTION

Select the Epson Port Driver (ESDPRTxxx) to be used for printing. Do not use COM or USB, or any other ports. The APD works only with the Epson Port Driver.

Advanced

Allows you to configure the detailed settings for printing. Basically, use as they are configured by default.

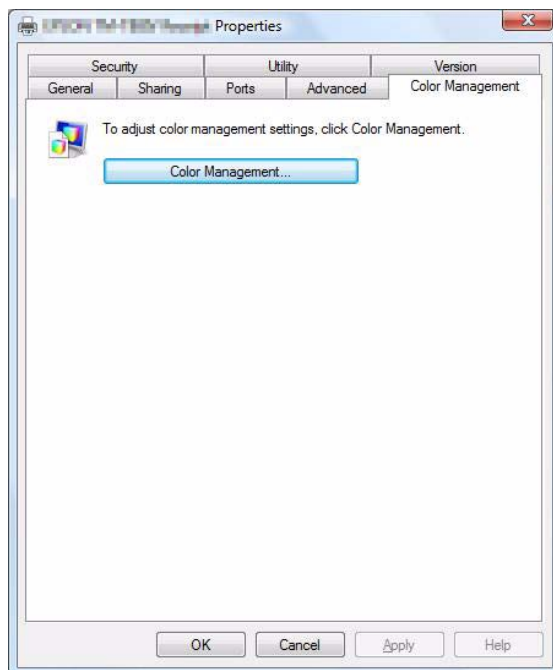


| Setting | Description |
|---|--|
| Always available | Makes the printer always available. |
| Available from | Configures the printer for limited availability. If you send a document to a printer when it is unavailable, the document will be held (spooled) until the printer is available. |
| Priority | Indicates the current priority setting. Higher-priority documents will print before lower-priority documents. |
| Driver | Lists the name of the installed printer driver. The printer driver name usually corresponds to the name of the print device. |
| Spool print documents so program finishes printing faster | Specifies that documents should be spooled before being printed. |
| Start printing after last page is spooled | Specifies that the print device should wait to begin printing until after the last page of the document is spooled. The printing program is unavailable until the document has finished spooling. However, using this option ensures that the whole document is available to the print device. Configurable when (Spool print documents so program finishes printing faster) is set. |

| Setting | Description |
|-----------------------------------|---|
| Start printing immediately | Specifies that the print device should begin printing after the first page of the document is spooled. This makes the printing program available sooner. Configurable when (Spool print documents so program finishes printing faster) is set. |
| Print directly to the printer | Specifies that the document should be sent directly to the print device and not spooled. Use this if you cannot print using either of the print spooling options. |
| Hold mismatched documents | Directs the spooler to check the printer setup and match it to the document setup before sending the document to the print device. If the information does not match, the document is held in the queue. A mismatched document in the queue will not prevent correctly matched documents from printing. Configurable when (Spool print documents so program finishes printing faster) is set. |
| Print spooled documents first | Specifies that the spooler should favor documents that have completed spooling when deciding which document to print next, even if the completed documents are a lower priority than documents that are still spooling. If there are no documents that have completed spooling, the spooler will favor larger spooling documents over smaller ones. Use this option if you want to maximize printer efficiency. When this option is disabled, the spooler picks documents based only on priority. Configurable when (Spool print documents so program finishes printing faster) is set. |
| Keep printed documents | Specifies that the spooler should not delete documents after they are printed. This allows a document to be resubmitted to the printer from the printer queue instead of from the program. Configurable when (Spool print documents so program finishes printing faster) is set. |
| Enable advanced printing features | Specifies whether the advanced printing feature is enabled. When enabled, metafile spooling is turned on and options such as Page Order, Booklet Printing, and Pages Per Sheet are available, depending on your printer. For normal printing, leave the advanced printing feature set to the default (Enabled). If compatibility problems occur, you can disable the feature. When disabled, metafile spooling is turned off and the printing options might be unavailable. Configurable when (Spool print documents so program finishes printing faster) is set. |
| Printing Defaults... | Click to configure the Printing Preferences. |
| Print Processor... | Click to specify the data type. In general, you do not need to change either the default print processor or data type. However, a few programs might require a specialized print processor and a particular data type to print. |
| Separator Page... | Not available. |

Color Management

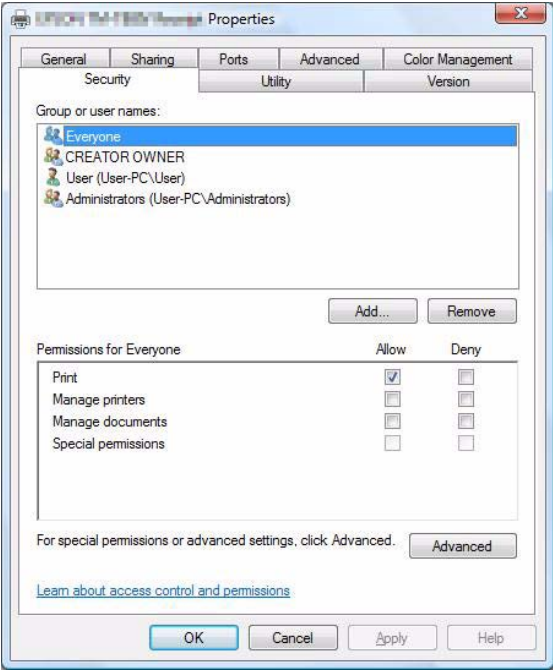
Allows you to set color displayed on the screen.



| Setting | Description |
|------------------|---------------------------|
| Color Management | Set the color management. |

Security

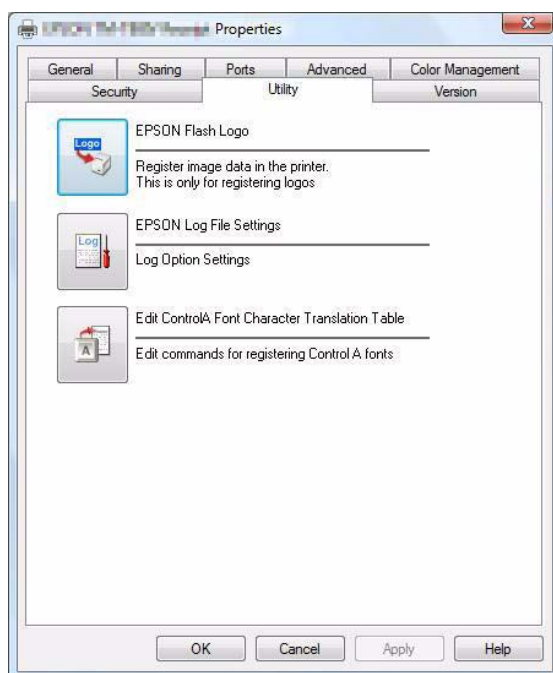
Security setting for Windows.



| Setting | Description |
|--------------------------------|---|
| Group or user names | Lists the users and groups with assigned permissions for this object. The permissions for the highlighted group or user appear in the list box below. |
| Add | If you want to add permissions for users or groups, click their names. |
| Remove | Removes highlighted permission entry. More than one permission entry can be connected with a user or group. |
| Permissions for Administrators | Permissions you can allow or deny for each user or group are listed. To allow or deny the permission, check or clear the appropriate check- box. Shaded checkboxes indicate inherited permissions. To see additional information on permissions or inheritance, click Advanced. |
| Advanced | Click for viewing and setting special permissions, auditing information, owner information, and permissions effective for this object. |

Utility

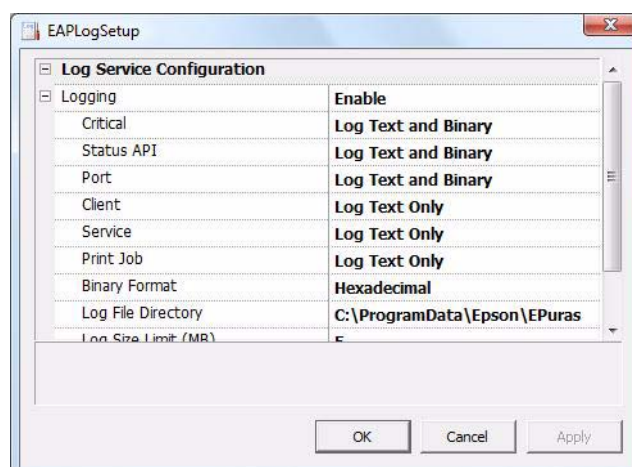
Allows you to use EPSON Log File Settings, Edit ControlA Font Character Translation Table, and other utilities.



| Setting | Description |
|--|---|
| EPSON Flash Logo | The EPSON TM Flash Logo Setup Utility Ver.3 (" TM Flash Logo Setup Utility Ver.3 " on page 91) screen of the printer appears. |
| EPSON Log File Settings | Opens the Log File Setting screen. |
| Edit ControlA Font Character Translation Table | Opens the EPSON controlA font setting screen. |

EPSON Log File Setting

Allows you to create a log file which can help you to troubleshoot a problem quickly. See the Status API Manual for more details about the log file.



| Setting | | Description |
|------------|--|--|
| Logging | Enable (Default) | Enables log output. |
| | Disable | Disables log output. |
| Critical | Select how the Windows error information is output. | |
| | Log Text Only | Outputs the log as text data. |
| | Log Text and Binary (Default) | Outputs the log as text and binary data. |
| Status API | Select how the Status API log is output. | |
| | Do Not log | A Status API log is not output. |
| | Log Text Only | Outputs the log as text data. |
| | Log Text and Binary (Default) | Outputs the log as text and binary data. |
| Port | Select how the log of the communication port is output. | |
| | Do Not log | A communications port log is not output. |
| | Log Text Only | Outputs the log as text data. |
| | Log Text and Binary (Default) | Outputs the log as text and binary data. |
| Client | Select how the log of the application on the client-server system is output. | |
| | Do Not log | A client log is not output. |
| | Log Text Only (Default) | Outputs the log as text data. |
| | Log Text and Binary | Outputs the log as text and binary data. |
| Service | Select how the log of the server on the client-server system is output. | |
| | Do Not log | A service log is not output. |
| | Log Text Only (Default) | Outputs the log as text data. |
| | Log Text and Binary | Outputs the log as text and binary data. |

| Setting | Description |
|---------------------|--|
| Print Job | Select how the log of print jobs is output. |
| | Do Not log A print job information log is not output. |
| | Log Text Only (Default) Outputs the log as text data. |
| | Log Text and Binary Outputs the log as text and binary data. |
| Binary Format | Configures the binary data format. |
| | Hexadecimal (Default) Outputs the log to a hexadecimal log file. |
| | Base64 Outputs the log to a Base64 log file. |
| Log File Directory | Specify where to output the log file. (Default) Windows XP: C:\Documents and Settings\All Users\Application Data\Epson\EPuras Windows 7 / Vista: C:\ProgramData\Epson\EPuras |
| Log Size Limit (MB) | Specify the upper limit of the log file size. When the upper limit is exceeded, the log file is compressed using zip format and saved as a BAK file. The subsequent log information is saved as a new log file. A sequential number is added to the name of the BAK files. (example: EpsonPOSPort1.bak). Specify the number of log files to be backed up. (Range: 1 to 1024 , Default: 5) |
| Backup File Count | Specify the number of log files to be backed up. (Range 1 to 9 , Default: 1) |

NOTE

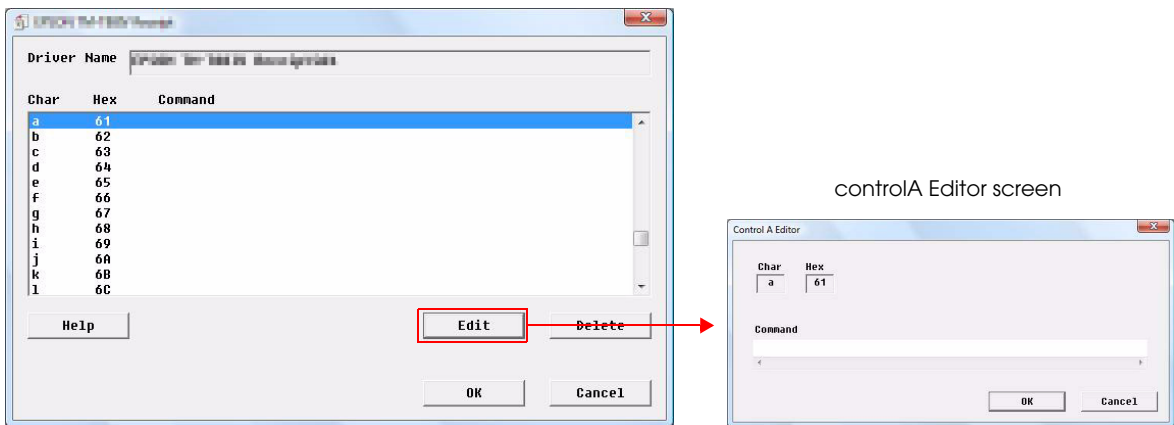
Output function of hexadecimal dumping list is not supported.

Edit controlA font character translation table

Allows you to edit EPSON controlA Font settings. You can assign ESC/POS commands to the selected controlA Font characters. When the assigned characters are printed, the corresponding ESC/POS commands are executed.

NOTE

- Up to 255 bytes characters can be assigned.
- ESC/POS commands are not open to the public. Ask your sales representative for more information.



| Setting | Description |
|-------------|---|
| Driver Name | Displays the printer driver name for which the controlA Font will be configured. |
| Char | Displays the selected ASCII code as characters. |
| Hex | Displays the selected ASCII code as hexadecimal. |
| Command | Displays the ESC/POS command corresponding to the ASCII code. It is displayed in hexadecimal. |
| Help | Displays the EPSON controlA Font help. |
| Edit | Displays the controlA Editor screen. Allows the (Command) to be edited. |
| Delete | Deletes the (Command) selected from the list box. |
| OK | Saves the configured settings and closes the EPSON controlA Font. |
| Cancel | Closes EPSON controlA Font without reflecting the changes. |

controlA Editor screen

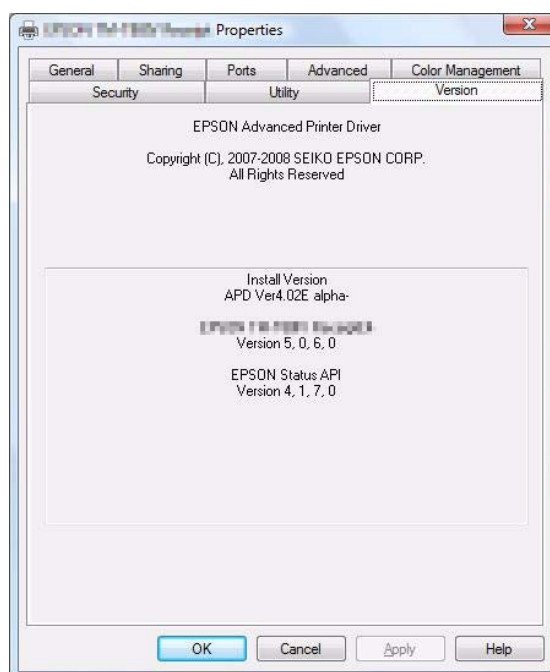
An ESC/POS command to be assigned to the selected character can be entered.



| Setting | Description |
|---------|--|
| Char | Displays the selected ASCII code as characters. The content cannot be changed. |
| Hex | Displays the selected ASCII code as hexadecimal. The content cannot be changed. |
| Command | Enter the ESC/POS command that will correspond to the ASCII code. Enter using hexadecimal. |

Version

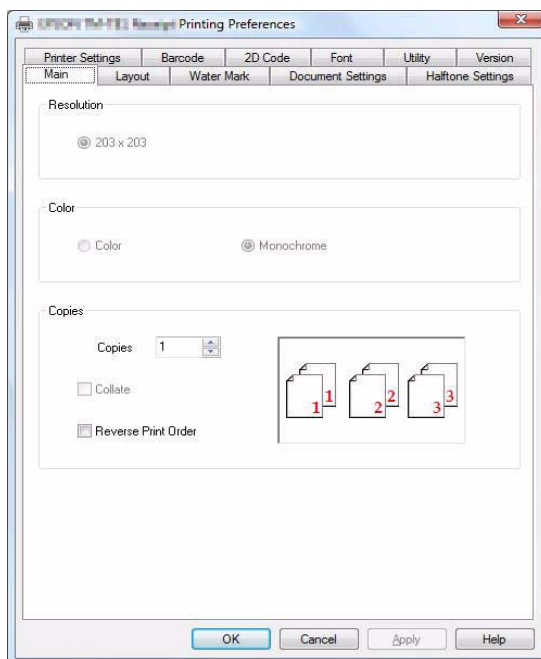
Displays the printer driver version information.



Printing Preferences

The Printing Preferences screen is displayed by selecting the Properties - [General] tab and clicking the [Printing Preferences...].

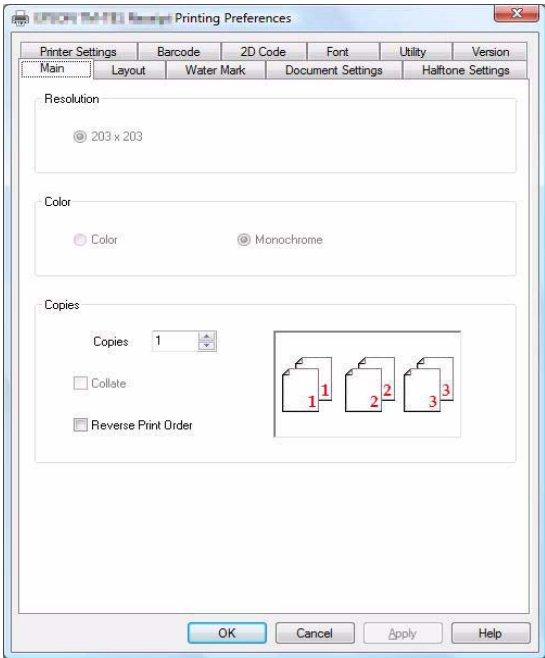
You can configure the following settings in the Printing Preferences screen.



| Tab | Description |
|-------------------|---|
| Main | Configures basic print settings, such as the number of copies, and color setting. |
| Layout | Configures paper size and rotation of print images. |
| Water Mark | Configures Water Mark setting. |
| Document Settings | Configures the Document Settings. |
| Halftone Settings | Configures the Dither Type and color assignment settings. |
| Printer Settings | Configures paper width for the TM printer. |
| Barcode | Configures the barcode settings. |
| 2D Code | Configures the 2D-Code settings. |
| Font | Displays the list of Device fonts. |

Main

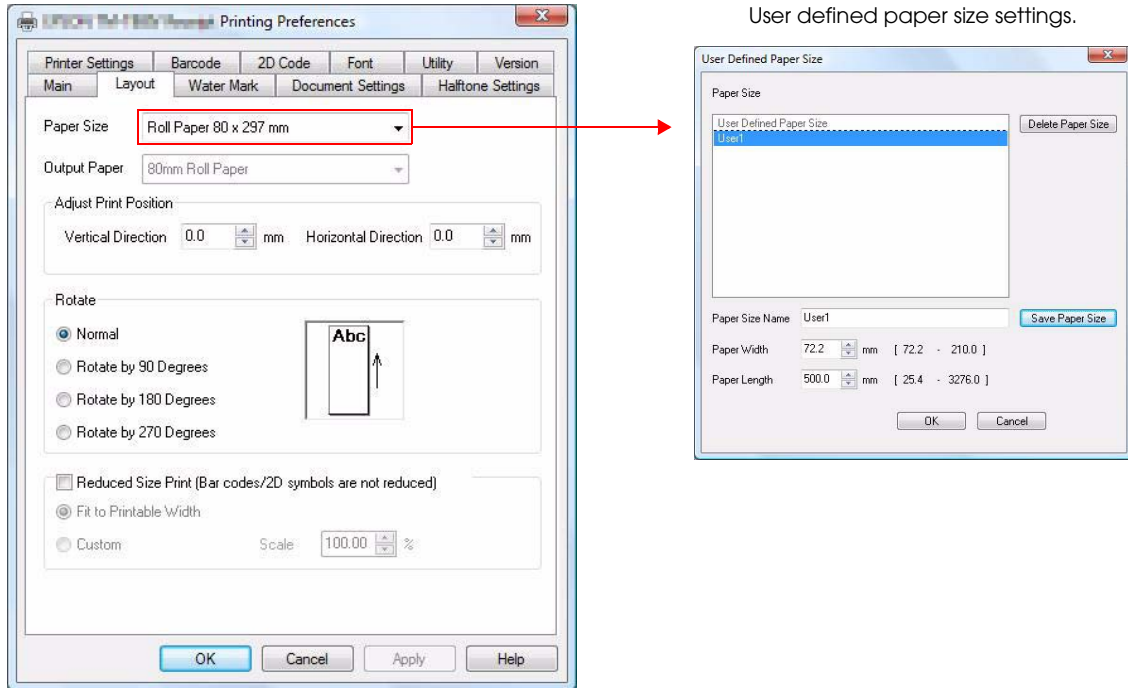
Allows you to configure the print resolution, color mode, and the number of copies.



| Setting | Description |
|---------------------|--|
| Resolution | The resolution of the TM printer is specified. |
| Color | Select whether to print in color or monochrome. Select the (Color) for making color print (two-color printing is made when the printer is two-color printer). Select (Monochrome) to print using a single color (black is uses as default). Some TM printer models require memory switch configuration.) |
| Copies | Configures the number of copies. |
| Collate | Configures the number of copies of document with multiple pages. |
| Reverce Print Order | Prints the document with multiple pages in backward order. |

Layout

Allows you to configure the paper size, rotation, and reduced print settings.



| Setting | | Description |
|--------------|-------------------------|--|
| Paper Size | | Select the paper size from list. The list shows all the paper sizes (including the logic paper sizes and user defined sizes) supported by the printer driver. |
| | Paper size | The sizes of paper which can be set in the TM printers. |
| | Logic paper size | The original size of a print image which can be scaled down by the printer driver. An image is scaled down to the size of paper loaded on the TM printer. |
| | User Defined Paper Size | The paper size defined by the users. Setting the paper size can be made in the User Defined Paper Size screen. |
| Output Paper | | Displays paper types available with the TM printer. |

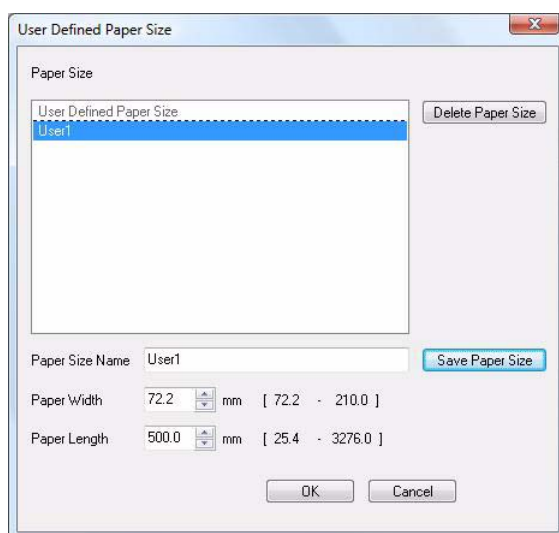
| Setting | | Description |
|-----------------------|------------------------|---|
| Adjust Print Position | | Allows you to fine adjust the print start position. You can adjust the print position without making changes in margins and print area defined by the applications. This also can be used for changing print position of rotated or reduced image. This adjustment is limited within the printable area of the selected (Paper Size). If you change the (Paper Size) to the smaller one without changing the print position setting, causing the position settings to fall outside the new printable area, the settings will be automatically changed so that the print image fits inside the new printable area. The print position of the logo registered in the TM printer (NV Graphics) will not be changed. |
| | Vertical Direction | This adjusts the print position in horizontal direction. Enter a negative value to make the top margin smaller, or positive value to make it larger. |
| | Horizontal Direction | This adjusts the print position in vertical direction. Enter a negative value to make the left margin smaller, or positive value to make it larger. |
| Rotate | | This configures print direction. The graphic shown on the right changes according to the selected setting. Select a desired setting for rotating a print image. When other than (Normal) is selected, the following message is displayed; "<Print all text as graphics image> will be automatically set to yes. <Paper Conservation> will be automatically changed.". |
| | Normal | This prints in normal direction. This is the default. |
| | Rotate by 90 Degrees | This rotates a print image as specified. |
| | Rotate by 180 Degrees | The rotated print image is printed as a graphics image, therefore, the Device fonts, control font, and controlA font cannot be used. |
| | Rotate by 270 Degrees | |
| Reduced Size Print * | | This configures reduced print, (Fit to Printable Width) or (Custom). When (Reduced Print) is selected, the following message is displayed; "<Print all text as graphics image> will be automatically set to yes.". The reduced print image is printed as a graphics image, therefore, the Device fonts, control font, and controlA font cannot be used. When Logic paper size is selected, deselecting (Reduced Print) automatically changes the paper size to Paper size or User Defined Paper Size. |
| | Fit to Printable Width | A print image is automatically scaled down so that it fits inside the width of the paper loaded on the TM printer. |
| | Custom | You can manually set the reduction percentage. |

* Reduced Print setting does not change the size of Barcode and 2D-Code.

User defined paper size.

Allows the users to define custom paper sizes. Up to 30 sizes can be saved as the User Defined Paper Sizes.

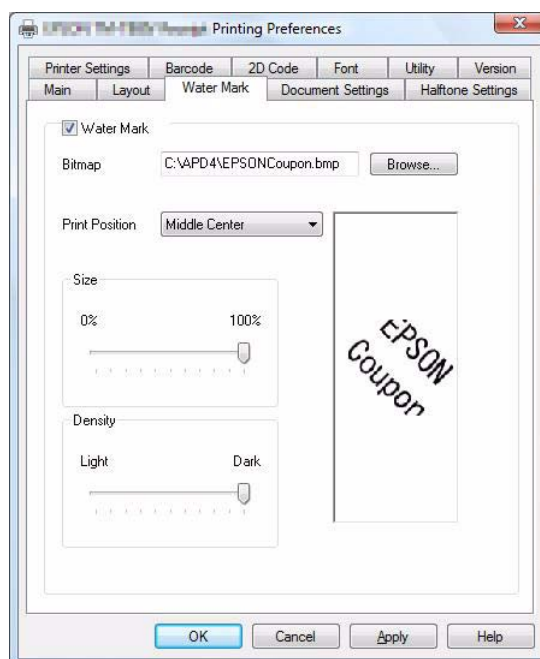
In the Printing Preferences - [Layout] tab, select [User Defined Paper Size] from the Paper Size pull-down menu. The following screen appears.



| Setting | Description |
|-------------------|--|
| Paper Size | This shows the list of saved User defined paper sizes. "To define a new custom size, select "User Defined Paper Size". When one of the saved custom sizes is selected from the list, the configured (Paper Size name), (Paper Width), and (Paper Length) are displayed and you can edit the setting. |
| Paper Size Name | An arbitrary name of each custom paper size can be specified using up to 24 characters. You can not use the name of the physical paper sizes, already shown in the Paper Sizes list in (Layout) tab. |
| Paper Width | Specifies a paper width. |
| Paper Length | Specifies a paper length. |
| Delete Paper Size | Deletes a selected custom paper size shown in the list. |
| Save Paper Size | Saves a configured custom paper size. The information of (Paper Size Name), (Paper Width), and (Paper Length) will be saved. If you edit the existing User defined paper size and click this button, the setting is overwritten. |
| OK | Saves the selected User Defined paper size. |
| Cancel | Cancels changes made on an existing User Defined paper size. |

Water Mark

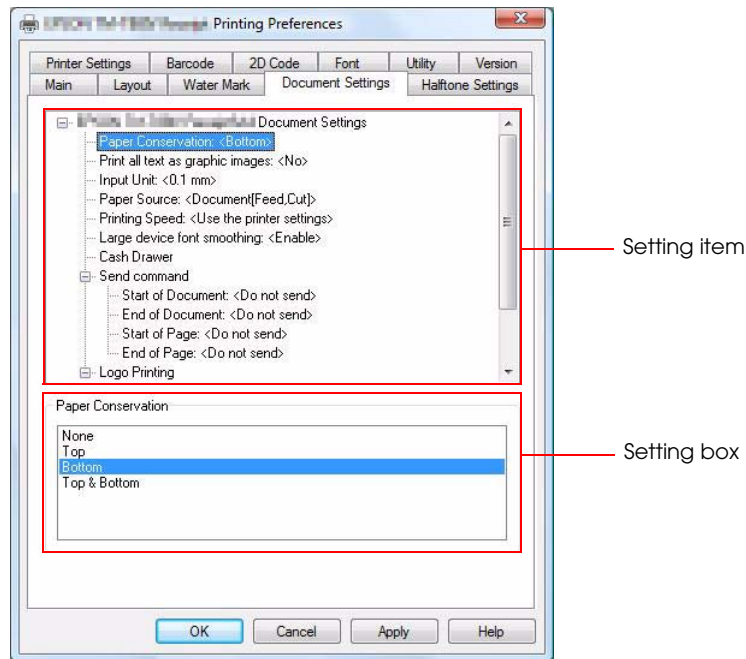
Allows you to set a bitmap file to be used as a Water Mark. The preview window shows the specified Water Mark image reflecting the selected Print Position, Size, and Density.



| Setting | Description |
|----------------|---|
| Water Mark | <p>Tick the checkbox to set a Water Mark.</p> <p>The following message is displayed; "<Print all text as graphics image> will be automatically set to yes.". When Water Mark is enabled, the print image is printed as a graphics image, therefore, the Device font is replaced with TrueType font, and control font and controlA font cannot be used.</p> |
| Bitmap | Specifies a bitmap file to be used as a Water Mark. |
| Print Position | <p>Select a desired print position from the pull-down menu.</p> <p>The following position settings are provided: Top Left/Top Center/Top Right/Middle Left/Middle Center/Middle Right/Bottom Left/Bottom Center/Bottom Right/Tiled</p> |
| Size | <p>Configures the size of Water Mark in a percentage of print area. The percentage can be specified within the range of 0 to 100. However, if you select "0", the Water Mark becomes too small and cannot be printed.</p> <p>When "100" is specified, the Water Mark will be enlarged or reduced so that it fits in the print area of the selected paper. However, depending on the horizontal to vertical ratio of the Water Mark image, such as a vertically long image, some portions of the image may exceed the print area and may not be printed. The length of paper is not changed according to the length of the Water Mark image.</p> |
| Density | Configures the density of the Water Mark. The density can be adjusted in the "Light" to "Dark" range. |

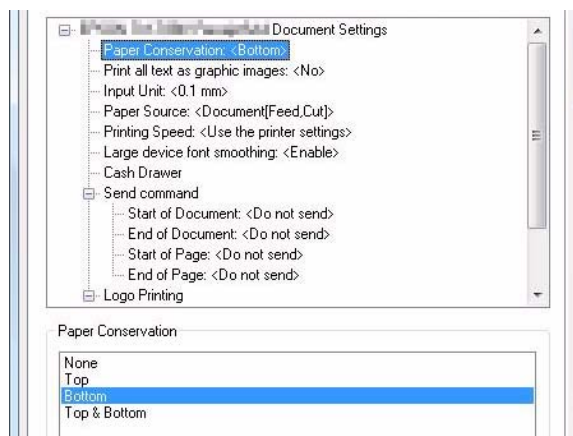
Document Settings

The Document Settings allows you to configure the document property. In the upper area of the window, the setting items are displayed in a tree view format, and the current settings of each setting items are shown on the right. If you select a setting item, the setting options for the selected item are displayed in the lower box.



Paper Conservation

You can save paper by skipping page margins. Printing in the Windows environment is made based on standard paper sizes, such as A4, A5 size. Therefore, regardless of whether print data has been received or not, paper is advanced automatically by a predetermined amount each time after a receipt is printed. This function allows you to save paper by disabling the automatic paper feeding.



| Setting | Description |
|------------------|--|
| None | Does not save paper. |
| Top | Skips the margin from the beginning of printing to the first print data. |
| Bottom (Default) | Skips the margin from the last line of the printout to the auto cut point. |
| Top & Bottom | Skips both margin from the beginning of printing to the first print data and margin from the last line of the print to the auto cut point. |

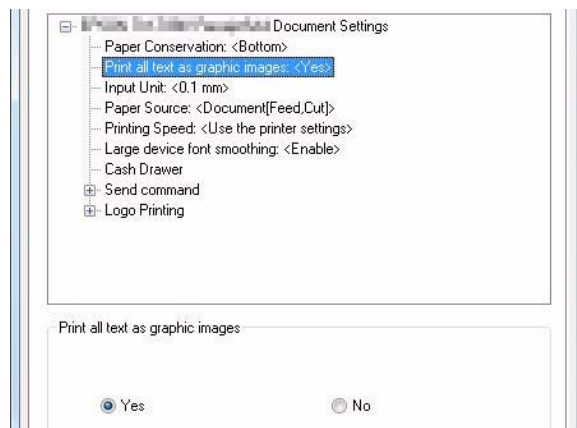
NOTE

According to the Rotate setting in the [Layout] tab, the Paper Conservation setting is automatically set as follows.

When the Rotate setting is set to "Normal" or "Rotate by 90 Degrees", the Paper Conservation is set to "Bottom". When "Rotate by 180 Degrees" or "Rotate by 270 Degrees" is specified, the Paper Conservation is set to "Top".

Print all text as graphic images

All the data will be printed as a graphic images.



| Setting | Description |
|----------------|---|
| Yes | All print data is printed as a graphics image. The computer creates the print data in the same way as Windows driver does, therefore, the print data size becomes larger. In addition to that, Device fonts are replaced with TrueType fonts, and Device fonts are not displayed in the (Font) tab. |
| No * (Default) | Device fonts are printed. The TM printer creates the print data, therefore, the data size becomes smaller. In addition to the Device fonts, you can also use control font, and controlA font. Due to some settings, you may not be able to change the setting from "Yes" to "No". In such case, a message appears to notify you of the setting that prevents the change. |

* When this setting is changed to "Yes" because of other settings, a message appears to notify you of the change.

CAUTION

If you select "Yes", you can not use device font / control font / controlA font.

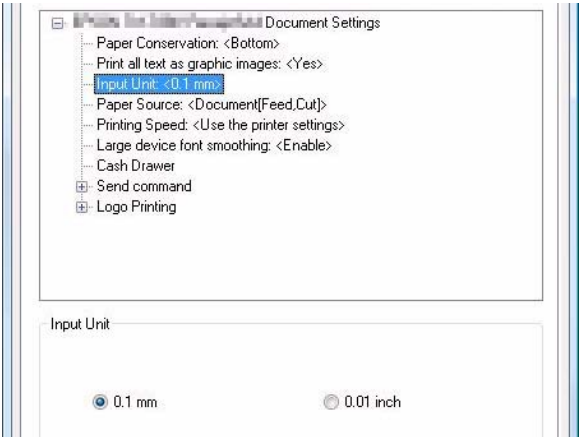
Related APD settings.

The following settings automatically change this setting to "Yes".

| Setting tab | Item |
|-------------|--|
| Layout | Rotate |
| | Reduced print |
| Water Mark | Water Mark |
| Barcode | Add Quiet Zone |
| | Rotation |
| | Composite (when not installed on the device) |
| | Type (when not installed on the device) |
| 2D-Code | Add Quiet Zone |
| | Rotation |
| | Type (when not installed on the device) |

Input Unit

The unit to express a length in the Property screen can be changed. Paper size or any other length settings are expressed in the selected unit in the user interface.



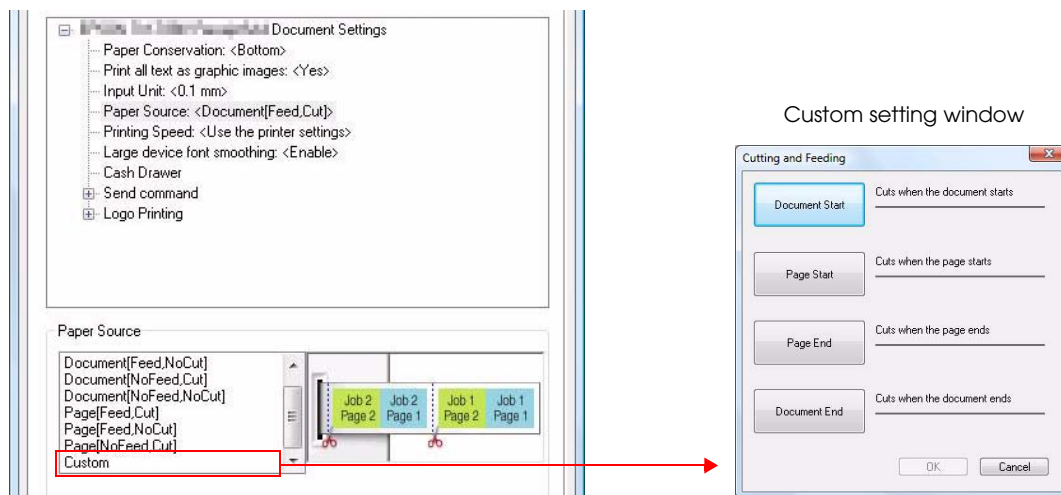
| Setting | Description |
|-----------------|--|
| 0.1mm (Default) | The length settings in the user interface can be made in increments of "0.1mm". |
| 0.01inch | The length settings in the user interface can be made in increments of "0.01inch". |

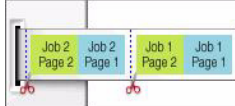
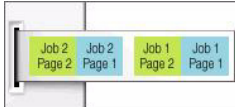
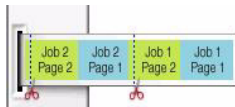
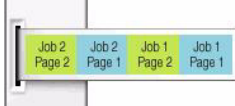
Related APD settings.

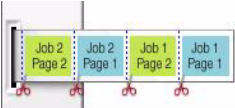
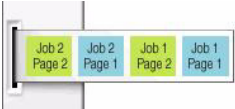
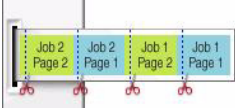
| Setting tab | Item |
|-------------|--|
| Layout | Paper Size (User Defined Paper Size : Paper Width, Paper Length) |
| | Adjust Print Position (Vertical Direction, Horizontal Direction) |
| Barcode | Element Height |

Paper Source

This setting allows you to select operations of the autocutter and paper feed between pages, and between print jobs.

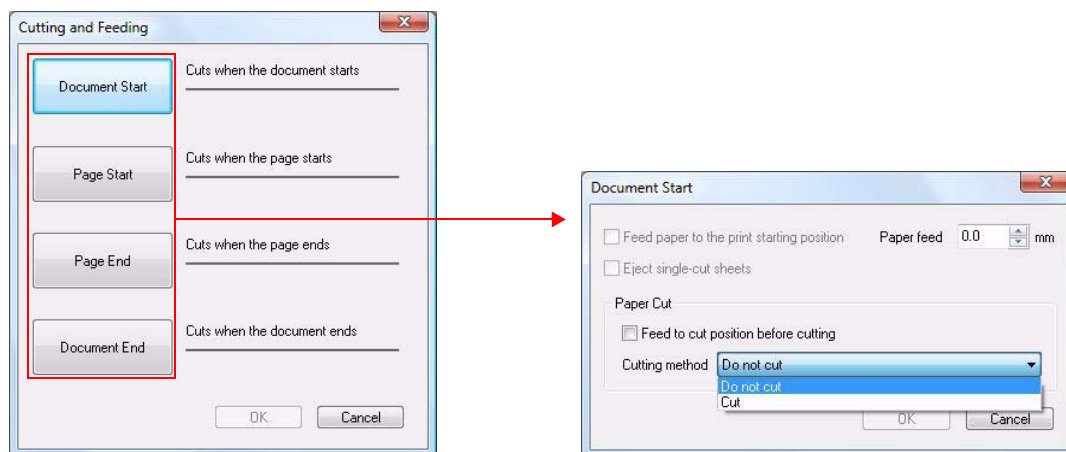


| Setting | Description |
|--------------------------|--|
| Document(Feed,Cut) | <p>The paper is advanced and cut each time a print job is finished.</p>  |
| Document(Feed,No Cut) | <p>The paper is advanced, but not cut each time a print job is finished.</p>  |
| Document(No Feed,Cut) | <p>The paper is cut, but not advanced each time a print job is finished.</p> <p>Because of the space between the autocutter and the print head (1 to 2 cm), a minimum top margin is provided even if you set the top margin to 0. To avoid the waste, this setting allows you to print the top of the next page (e.g. store logos) on the bottom of the previous page and then cut the paper without advancing it. In this way, the top margin created by the physical space of the TM printer can be used.</p>  |
| Document(No Feed,No Cut) | <p>The paper is not advanced and not cut each time a print job is finished.</p>  |

| Setting | Description |
|-------------------|---|
| Page(Feed,Cut) | <p>The paper is advanced and cut each time a page is printed.</p>  |
| Page(Feed,No Cut) | <p>The paper is advanced, but not cut each time a page is printed.</p>  |
| Page(No Feed,Cut) | <p>The paper is cut, but not advanced each time a page is printed.</p>  |
| Custom | <p>Use this setting when printing on black mark papers or labels. When this is selected, the Custom setting screen appears.</p> |

Custom

When "Custom" is selected from the Paper Source list for printing on black mark papers, labels or cut sheets of paper, the Custom setting screen appears.



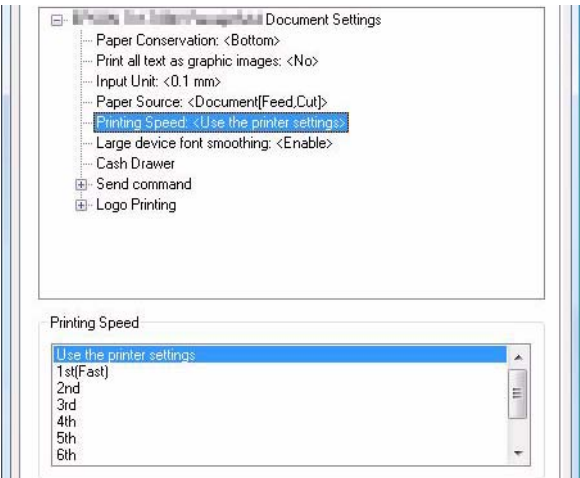
| Setting | Description |
|---|---|
| Feed paper to the print starting position | Specifies whether to advance labels or black mark papers to the print start position. When this box is checked, the paper is advanced to the start position. When not checked, the paper is not advanced. |
| Paper feed | Specifies the amount of paper to be advanced. When a positive value is specified, the paper is fed in the print direction. When 0 is specified, the paper is not advanced. |
| Eject single-cut sheets | Specifies whether to send a form feed command when using cut sheets. When this box is checked, the command is sent. When not checked, the command is not sent. |
| Feed to cut position before cutting | Specifies whether to advance the paper to the cut position before cutting operation. When this box is checked, the paper is advanced to the cut position. When not checked, the paper is not advanced. |
| Cutting method | Select the cutting operation. <ul style="list-style-type: none"> Do not cut Cut |

Printing Speed

You can change the print speed (paper feed speed), if that of your TM Printer is changeable.

When a large bitmap is printed using a thermal printer with the print speed set to higher, the data transmission may not be able to keep up with the print speed. This can cause the printer to pause during printing. Should this occur, the bitmap may not be printed correctly.

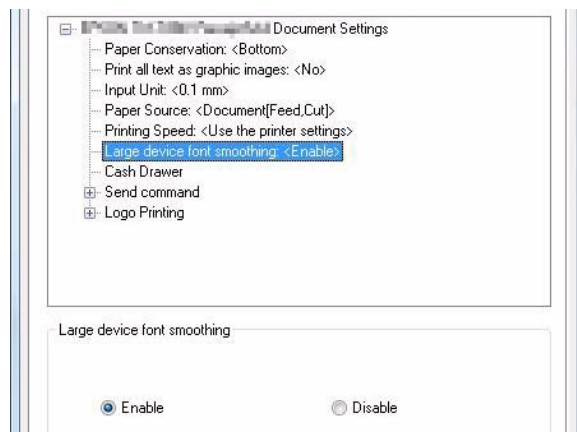
Adjust the print speed by changing the setting to 1st (fast), then 2nd (slightly slower), and then 3rd (slowest) in that order, until the image is printed properly without causing the printer to pause.



| Setting | Description |
|---------------------------------------|---|
| Use the printer setting. (Default) | The print speed set at the TM Printer is applied. |
| 1st to maximum (slowest) | 1st is the fastest, and the maximum is the slowest. |

Large device font smoothing

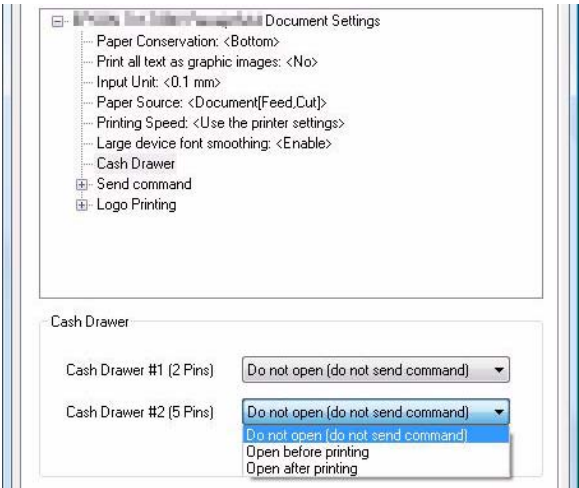
Large device fonts can be clearly and neatly printed.



| Setting | Description |
|------------------|--|
| Enable (Default) | Performs smoothing of the large Device fonts to print them neatly. |
| Disable | The corners of large device fonts may be printed with jaggies. |

Cash drawer

You can configure the setting for opening the Cash drawer. A command for opening the Cash drawer is sent to the drawer connected to the TM Printer through the DK connector. See the Cash drawer specifications to check the connector number for the Cash drawer.



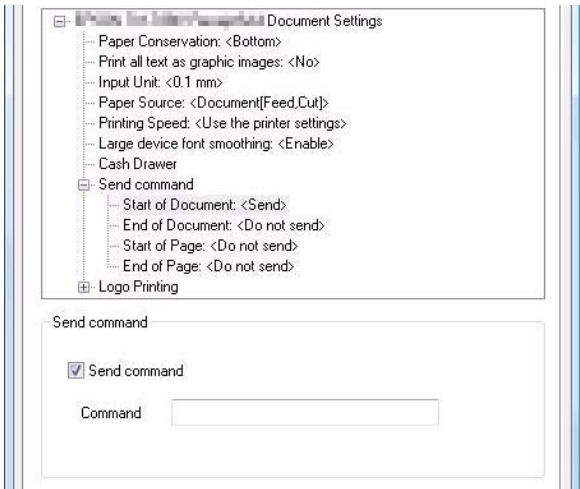
| Setting | | Description |
|------------------------|---|---|
| Cash drawer #1 (2pins) | Do not open (do not send command) (Default) | The drawer does not open. |
| | Open before printing | The drawer opens when printing starts. |
| | Open after printing | The drawer opens when printing is finished. |
| Cash drawer #2 (5pins) | Do not open (do not send command) (Default) | The drawer does not open. |
| | Open before printing | The drawer opens when printing starts. |
| | Open after printing | The drawer opens when printing is finished. |

Send command

ESC/POS commands can be sent to the TM printer directly.

NOTE

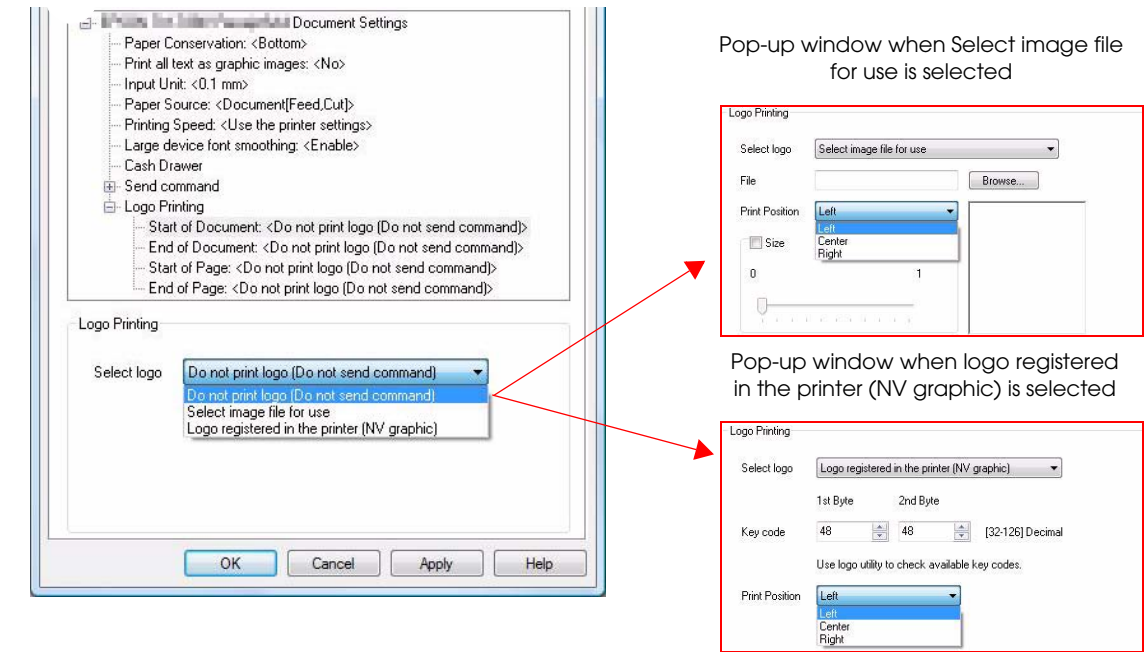
ESC/POS commands are not open to the public. Ask your sales representative for more information.



| Setting | | Description |
|-------------------|--------------|---|
| Start of Document | Send command | Check this box to send a command when printing. |
| End of Document | Command | Enter a desired ESC/POS command to be sent to the TM printer. |
| Start of Page | | You cannot enter the command without checking the "Send command" box. |
| End of Page | | |

Logo Printing

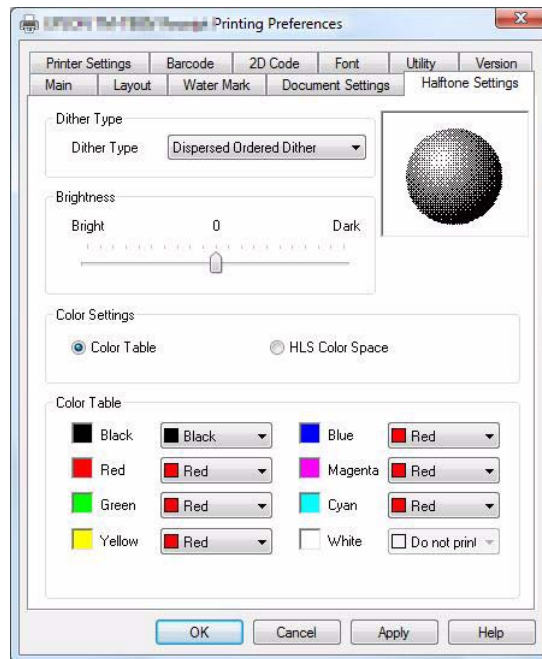
A desired logo can be specified to be printed.



| Setting | | Description |
|--|---|--|
| Start of Document End of Document Start of Page End of Page | Do not print logo (Do not send command) | Does not print a logo. |
| | Select Image file for use | Prints a logo using an image file. |
| | File | Specify an image file. The following file types are available: bmp, jpeg, gif, and png. |
| | Print Position | Specify a logo print position. Select Left, Center, or Right. |
| | Size | Specify the logo size for printing. Refer to the layout displayed in the preview window. |
| | Logo registered in the printer (NV graphic) | Print a logo registered in the TM printer. |
| | Key code | Enter a Keycode of the desired logo. |
| | Print Position | Specify a logo print position. Select Left, Center, or Right. |

Halftone Settings

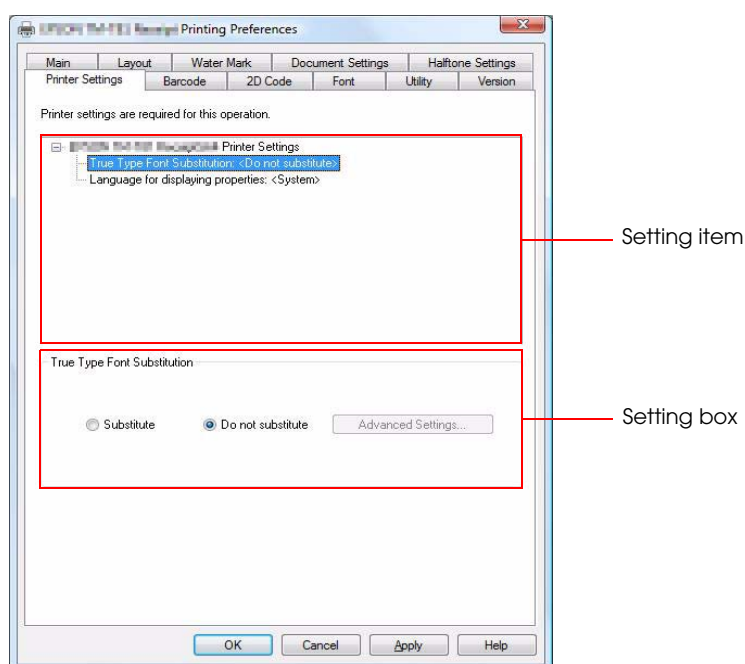
Allows you to select the color treatment and dither type to print color graphics with a single-color printer.



| Setting | Description |
|--|---|
| Dither Type | <p>Defines the dithering algorithm. Depending on the dither type selected, the image is displayed with a different pattern of dots. The following 4 options are available.</p> <ul style="list-style-type: none"> • Dispersed Ordered Dither • Clustered Ordered Dither • Error Diffusion • Threshold |
| Brightness (A function dedicated for the printer driver for thermal printers) | Sets the brightness of image data. Dots are displayed based on the arrangement set by (Brightness). |

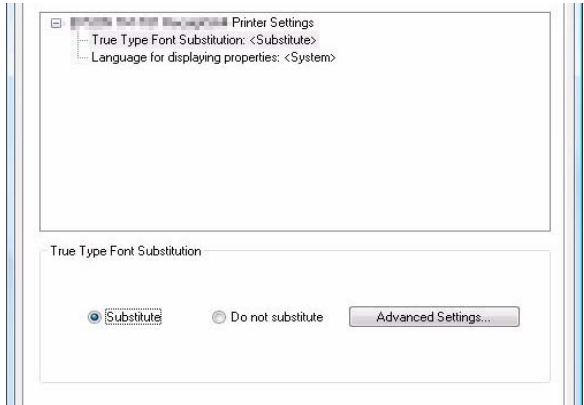
Printer Settings

Allows you to make settings of the printer. The setting items are displayed in the upper box of the Printer Settings screen. If you select a setting item, the setting options for the selected item are displayed in the lower box.



TrueType Font Substitution

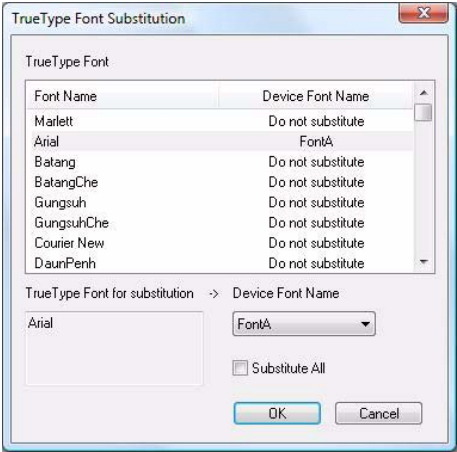
Allows you to replace TrueType Font with Device font, Barcode font, 2D-Code font, control font, or controlA font.



| Setting | Description |
|----------------------|---|
| Substitute (Default) | Replaces TrueType font with Device font, Barcode font, 2D-Code font, control font, or controlA font. |
| Do not Substitute | Does not replace the TrueType font. |
| Advanced settings | Displays the "TrueType Font Substitution" screen. This button is enabled when the "Replace" is selected. |

TrueType Font Substitution settings

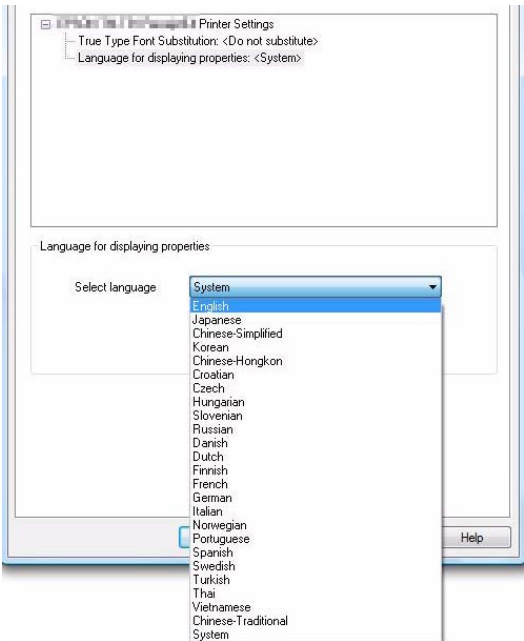
Allows you to configure TrueType substitution settings. In the case that Device fonts cannot be used, the substitution setting is ignored and TrueType fonts are printed as they are.



| Setting | Description |
|--------------------------------|---|
| TrueType Font | Displays the TrueType font list. Select TrueType fonts to be replaced. |
| TrueType Font for substitution | Displays the fonts selected by the "TrueType Font" list. |
| Device Font Name | Specify the device fonts to be replaced, "Barcode","Control","ControlA" and "2D-Code". |
| Substitute All | Replace all the TrueType Font on the "TrueType Font" list to the fonts selected on (Device Font Name). If you put a check mark next to this item, (TrueType Font) will be grayed out. |

Language for displaying properties

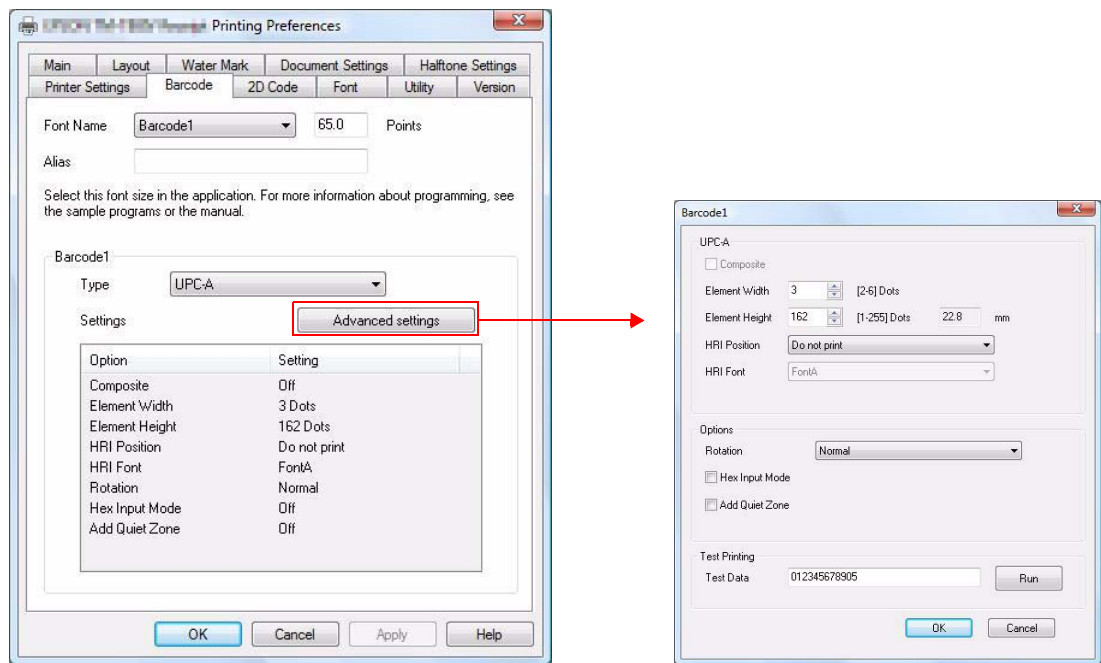
Allows you to select from 24 languages for text on screen and help dialog.



| Setting | Description |
|-----------------|---|
| Select language | Select a language from the pull-down list for text on screen and help dialog. You can select from the following 24 languages. English, Japanese, Chinese-Simplified, Korean, Chinese-Hongkon, Croatian, Czech, Hungarian, Slovenian, Russian, Danish, Dutch, Finnish, French, German, Italian, Norwegian, Portuguese, Spanish, Swedish, Turkish, Thai, Vietnamese, Chinese-Traditional |

Barcode

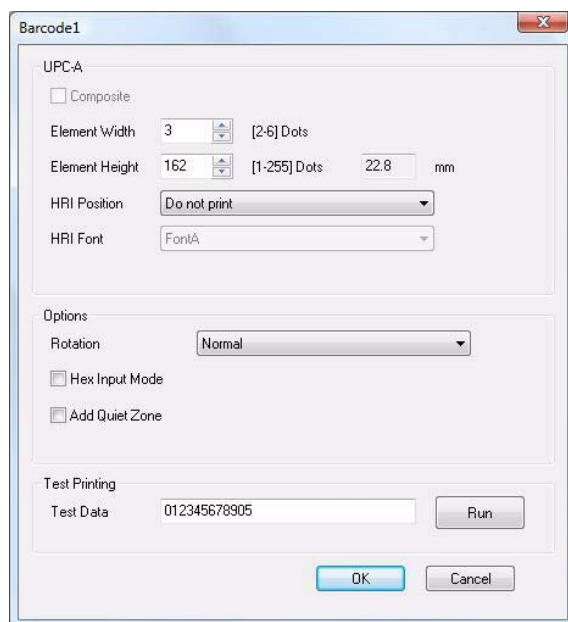
Allows you to configure Barcode fonts. The barcode type and size can be registered. Up to eight types of barcodes (Barcode 1 to 8) can be registered using the APD.



| Setting | Description |
|-------------------|--|
| Font Name | Select a desired barcode font from the pull-down list. The point value changes according to the height of the element. |
| Alias | An alias name can be specified for the selected barcode font. Up to 31 characters can be entered. Alphanumeric characters, spaces, and the following symbols can be used. Available characters: !"#\$%&'()*+,-./:;<=>?@(\)^_`{ }~ |
| Type | Select a desired barcode type from the pull-down list (UPC-A, UPC-E, JAN13 (EAN), JAN8 (EAN), Code39, ITF, Codabar, Code93, Code128). Select "Not Use" when not specifying the barcode type. |
| Advanced settings | Displays the barcode advanced setting screen that allows you to select the barcode size, HRI characters and so on. |
| Settings | Displays the barcode font settings. |

Barcode advanced setting

The barcode advanced setting screen is displayed by clicking the Advanced settings button. This allows you to select the barcode size, HRI characters and so on.

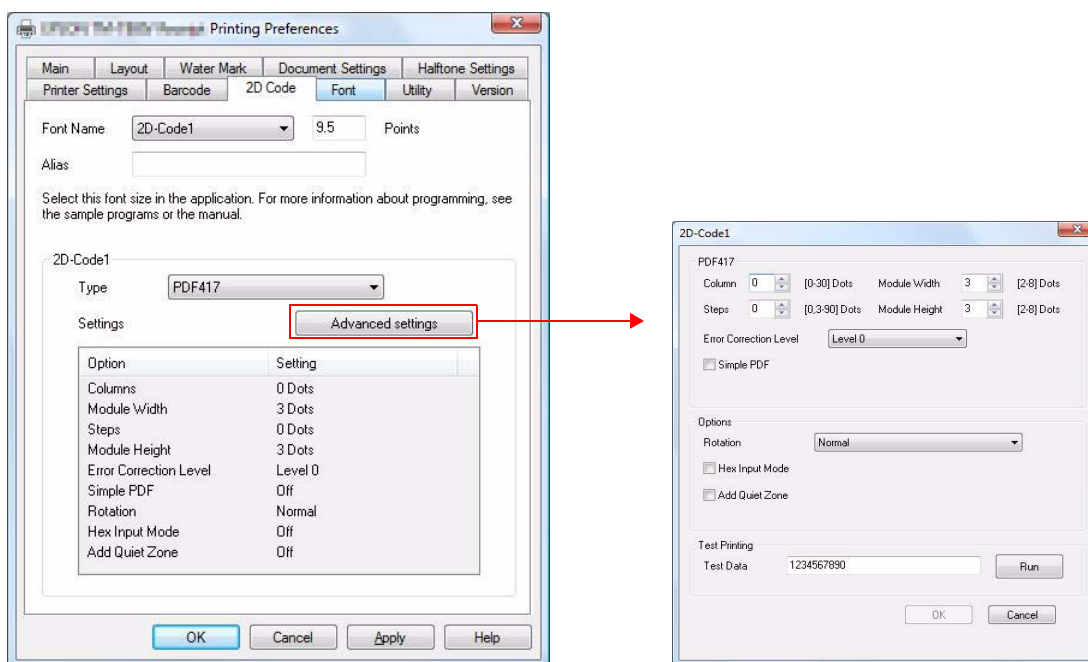
A screenshot of the 'Barcode1' advanced settings dialog box. The dialog has a title bar with a close button. It is divided into several sections. The 'UPC-A' section contains a 'Composite' checkbox, 'Element Width' (set to 3, range [2-6] Dots), 'Element Height' (set to 162, range [1-255] Dots), a unit of 22.8 mm, 'HRI Position' (set to 'Do not print'), and 'HRI Font' (set to 'FontA'). The 'Options' section has a 'Rotation' dropdown (set to 'Normal'), and checkboxes for 'Hex Input Mode' and 'Add Quiet Zone'. The 'Test Printing' section has a 'Test Data' field with '012345678905' and a 'Run' button. At the bottom are 'OK' and 'Cancel' buttons.

| Setting | Description |
|----------------|--|
| Element Width | Specify the width of thin elements by the number of dots. The settable range is between 2 to 6. The width of a barcode is determined with this value and the number of characters in the barcode. If the width of the barcode becomes wider than the printable area of the paper, the barcode cannot be printed or may be printed even out of the area. |
| Element Height | Specify the height of elements by the number of dots. The settable range is between 1 to 255 (unit: dot). The specified dots is displayed in the actual size (mm, the number of points) when printed. |
| HRI Position | Specifies the position of the HRI characters (barcode data) from the pull-down list (Do not print, Above the barcode, Below the barcode, Both above and below the barcode). |
| HRI Font | Specifies the font of the HRI characters from the pull-down list (FontA, FontB). The FontC is available only with some specific TM printers. This option is grayed out when "No printing" is selected in the (HRI Position). |

| Setting | | Description |
|----------------|-----------------------|--|
| Rotation | | Specifies the print direction of barcode. When other than "Normal" is selected in the Rotation setting, the following message is displayed: "<Print all text as graphics image> will be automatically set to yes." When other than "Normal" is specified for the Rotation setting both in the (Layout) tab and the (Barcode) - (Advanced settings), the both settings are applied to the printed barcode at a time. |
| | Normal | Prints the barcode without rotating it. |
| | Rotate by 90 Degrees | Rotates the barcode to print it. The whole print data is printed as a graphics image, therefore, the Device fonts, control font, and controlA font cannot be used. |
| | Rotate by 180 Degrees | |
| | Rotate by 270 Degrees | |
| Hex Input Mode | | Allows the barcode characters to be entered in binary. Ex : "00010203" → 0x00 0x01 0x02 0x03 |
| Add Quiet Zone | | Check this box to add a quiet zone, the blank margin on either side of a barcode, required to be properly read by a barcode reader. The quiet zone is added without changing the barcode position. |
| Test Printing | | Prints a set barcode as test printing. |
| | Test Data | Inputs data for test printing. |
| | Run | Prints input data. |

2D-Code

Allows you to configure 2D-Code fonts. The 2D-Code type and size can be registered. Up to eight types of barcodes (2D-Code 1 to 8) can be registered using the APD.

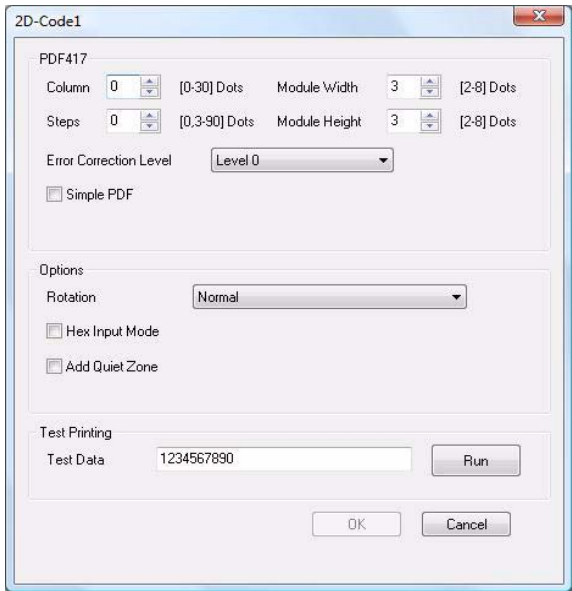


| Setting | Description |
|-------------------|--|
| Font Name | Select a desired 2D-Code font from the pull-down list. The point value changes according to the height of the 2D-Code. |
| Alias | An alias name can be specified for the selected 2D-Code font. Up to 31 characters can be entered. Alphanumeric characters, spaces, and the following symbols can be used. Available characters: !"#\$%&'()*+,-./:;<=>?@(\)^_`{ }~ |
| Type | Select a desired 2D-Code type from the pull-down list (PDF417 or QR Code). Select "Not Use" when not specifying the type. |
| Advanced settings | Displays the 2D-Code advanced setting screen that allows you to make the detailed settings for each type of the 2D-Code. |
| Settings | Displays the current 2D-Code font settings. |

2D-Code advanced settings

The 2D-Code advanced setting screen is displayed by clicking the Advanced settings button.

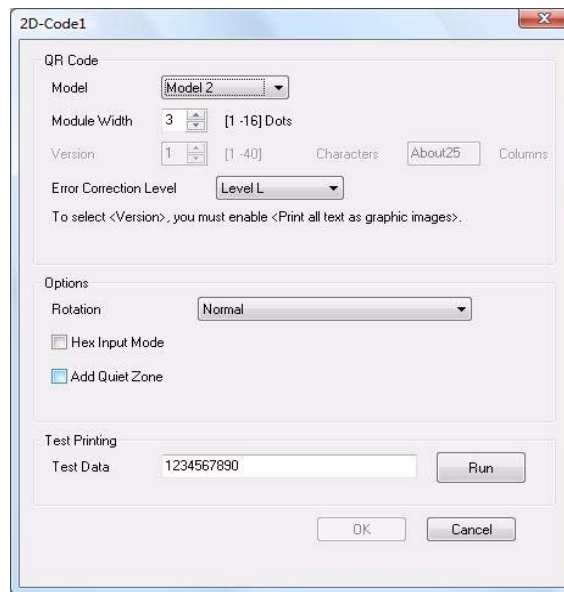
PDF417



| Setting | Description |
|------------------------|--|
| Column | Specifies the number of columns of PDF417 to be printed. The setting can be changed within the range of 0 to 30. |
| Steps | Specifies the number of steps of PDF417 to be printed. The setting can be changed within the range of 0 to 30. |
| Module Width | Specifies the cell (module) width of PDF417 to be printed. The setting can be changed within the range of 2 to 8. |
| Module Height | Specifies the cell (module) height of PDF417 to be printed. The setting can be changed within the range of 2 to 8. |
| Error Correction Level | Specifies the error correction level for PDF417 (Level 0 to Level 8). |
| Simple PDF | Specifies the option of PDF417 to be printed. |

| Setting | | Description |
|----------------|-----------------------|--|
| Rotation | | Specifies the print direction of 2D-Code. When other than "Normal" is selected in the Rotation setting, the following message is displayed: "<Print all text as graphics image> will be automatically set to yes." When other than "Normal" is specified for the Rotation setting both in the (Layout) tab and the (2D-Code) - (Advanced settings), the both settings are applied to the printed 2D-Code at a time. |
| | Normal | Prints the 2D-Code without rotating it. |
| | Rotate by 90 Degrees | Rotates the 2D-Code to print it. The whole print data is printed as a graphics image, therefore, the Device fonts, control font, and controlA font cannot be used. |
| | Rotate by 180 Degrees | |
| | Rotate by 270 Degrees | |
| Hex Input Mode | | Allows the 2D-Code characters to be entered in binary. Ex : "00010203" → 0x00 0x01 0x02 0x03 |
| Add Quiet Zone | | Check this box to add a quiet zone, the blank margin around the 2D-Code, required to be properly read by a 2D-Code reader. The quiet zone is added without changing the 2D-Code position. |
| Test Printing | | Prints a set PDF417 as test printing. |
| | Test Data | Inputs data for test printing. |
| | Run | Prints input data. |

QR Code

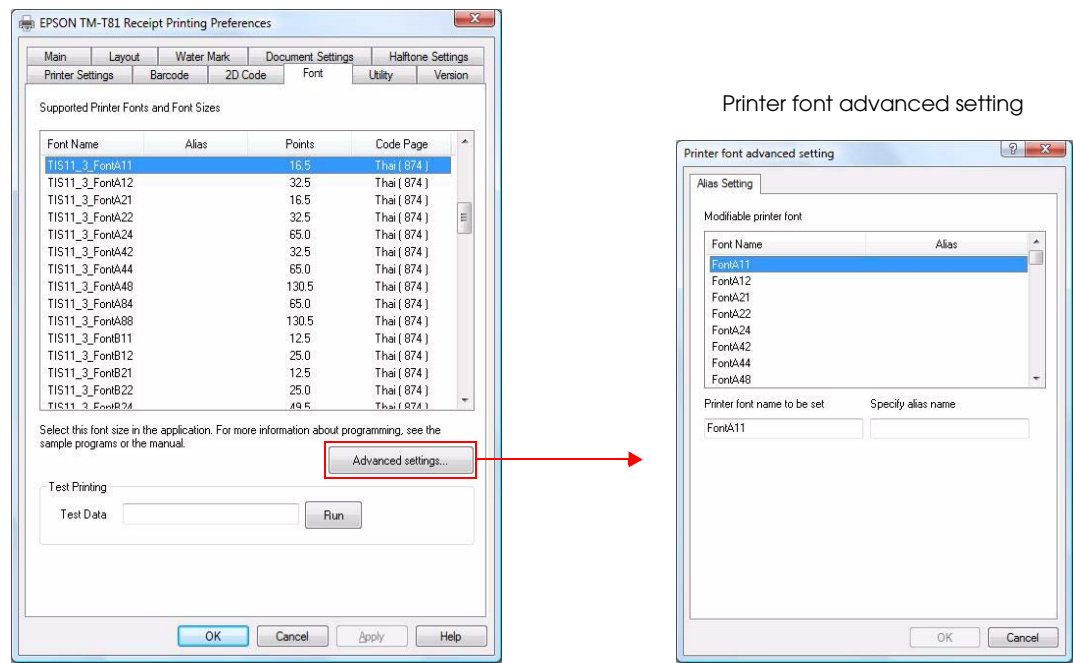


| Setting | | Description |
|------------------------|-----------------------|--|
| Model | | Specifies a QR Code model (Model 1 and Model 2). |
| Module Width | | Configures the cell (module) of QR Code to be printed. The setting can be changed within the range of 1 to 16. |
| Version | | Specifies the QR Code version. Depending on the QR Code version, the number of characters to be used for the 2D-Code changes. The settable versions are 1 to 16 when the "Model 1" is selected in the (Model), and 1 to 40 when the "Model 2" is selected. |
| Error Correction Level | | Specifies the error correction level for QR Code (Level L, Level M, Level Q, Level H). |
| Rotation | | Specifies the print direction of 2D-Code. When other than "Normal" is selected in the Rotation setting, the following message is displayed: "<Print all text as graphics image> will be automatically set to yes." |
| | Normal | Prints the 2D-Code without rotating it. |
| | Rotate by 90 Degrees | Rotates the 2D-Code to print it. The whole print data is printed as a graphics image, therefore, the Device fonts, control font, and controlA font cannot be used. |
| | Rotate by 180 Degrees | |
| Hex Input Mode | | Allows the 2D-Code characters to be entered in binary. Ex : "00010203" → 0x00 0x01 0x02 0x03 |

| Setting | | Description |
|------------------|-----------|---|
| Add Quiet Zone | | Check this box to add a quiet zone, the blank margin around the 2D-Code, required to be properly read by a 2D-Code reader. The quiet zone is added without changing the 2D-Code position. |
| Test Printing | | Prints a set QR Code as test printing. |
| | Test Data | Inputs data for test printing. |
| | Run | Prints input data. |

Font

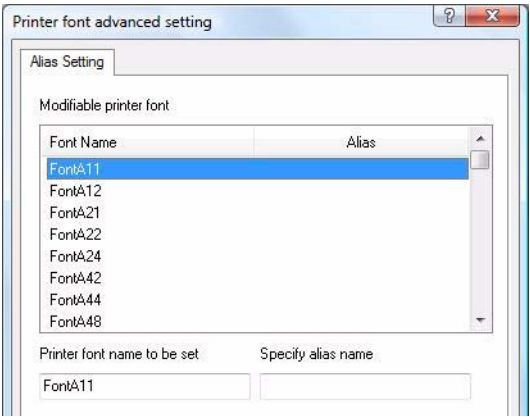
The device fonts; supported by TM printers, their points, and the code pages are listed. In addition, alias names can be specified to the device fonts. When using device fonts, specify their points in "Supported Printer Fonts and Font Sizes". When programming, designate the fonts and their points specified here.



| Setting | | Description |
|-------------------|-----------|--|
| Advanced settings | | When the Printer font advanced setting screen is displayed, specify an alias name to the device fonts. |
| Test Printing | Test Data | Prints the device font as test printing. |
| | Run | Inputs data for test printing. |

Printer font advanced setting

Specify an alias name to the device fonts.



| Setting | Description |
|-----------------------------|---|
| Modifiable printer font | The device fonts to which their alias names can be specified are displayed. |
| Printer font name to be set | The fonts selected from the "Modifiable printer font" list are displayed. |
| Specify alias name | Specify an alias name. |

TM Flash Logo Setup Utility Ver.3

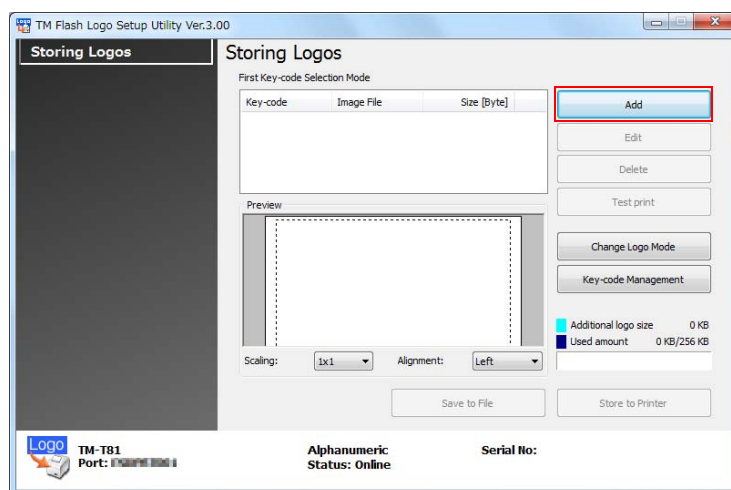
This chapter explains how to store logos and how to use TM Flash Logo Setup Utility Ver.3.

TM Flash Logo Setup Utility Ver.3 allows users to print and delete the logos stored in the printer but not to edit, restore or save them in a file format.

Storing Logos

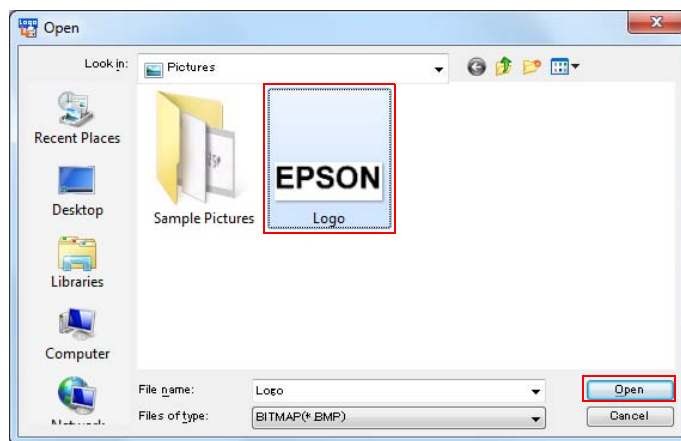
Follow the procedure below to save your logo file to the NV memory.

- 1** Prepare your logo file.
A size of 2047 (W) x 831 (H) dots ((Key-code Nonuse Mode (not recommended)): 1023 (W) x 288 (H) dots) or less can be specified, and the format can be bmp, jpeg, gif or png.
- 2** From the printer driver properties, select (Utility)-(EPSON Flash Logo).
The (TM Flash Logo Setup Utility Ver.3) screen appears.
- 3** Click the (Add) button.

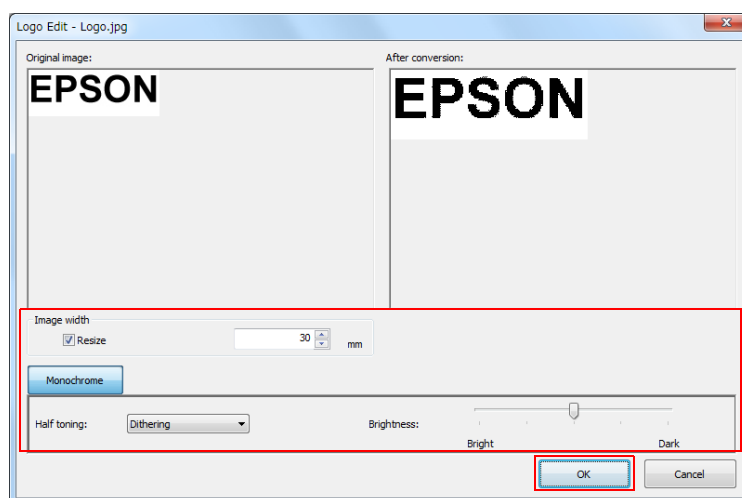


4 Specify the image data to be used as a logo.

If the logo width is greater than the paper width (greater than 512 dots for 80 mm width, or greater than 360 dots for 58 mm width), a warning message will appear. Click the (OK) button and reduce the logo size in the (Logo Edit) screen of step 5.



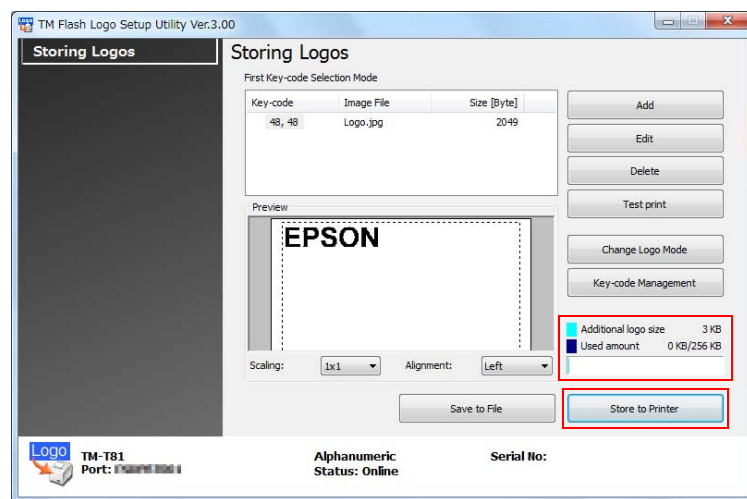
5 The (Logo Edit) screen appears. Edit the logo image while checking the image previewed on the upper portion of the screen. When finished, click the (OK) button.



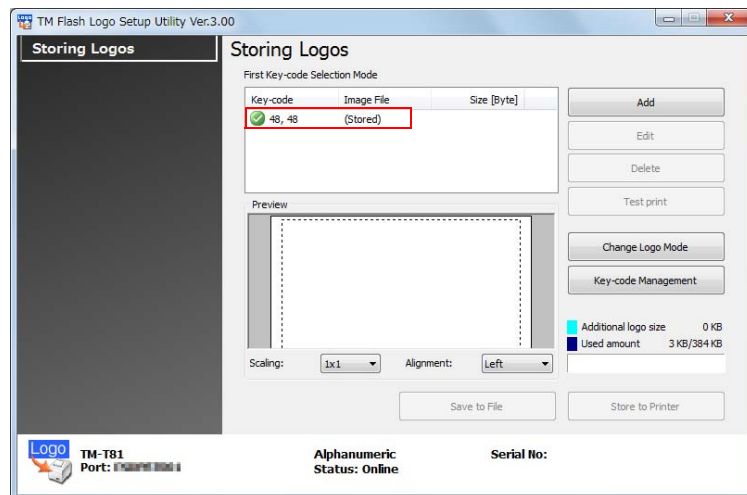
You can edit the followings.

| Setting | Description |
|-------------|--|
| Resize | Specifies whether or not the image is resized. If the image width is greater than the paper width and resizing is not specified, the part of the image that exceeds the paper width will be cut off. |
| Width | Specifies the width to which the image is resized (in mm). |
| Half toning | Configures the halftone setting of the image. Select from (Dithering) / (Error diffusion) / (None). |
| Brightness | Configures the brightness of the image. Select from 5 levels. |

- 6 The logo data is added on the list. When storing multiple logo data, repeat Step 3 through 5.
- 7 After storing all the logo data to be added to the printer, check the indicator on the right side of the screen to see if the data size is acceptable to be stored on the printer, and then click the (Store to Printer) button.

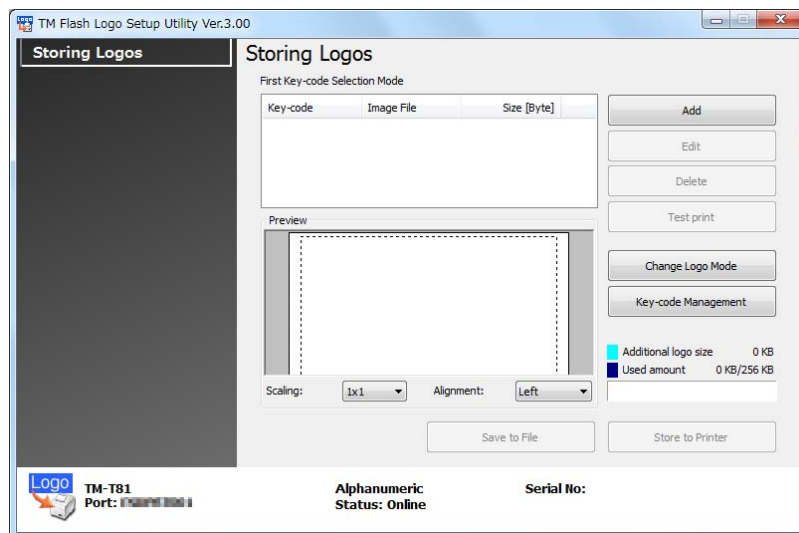


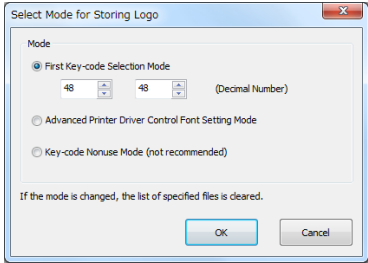
- 8 The logo data is stored to the printer.

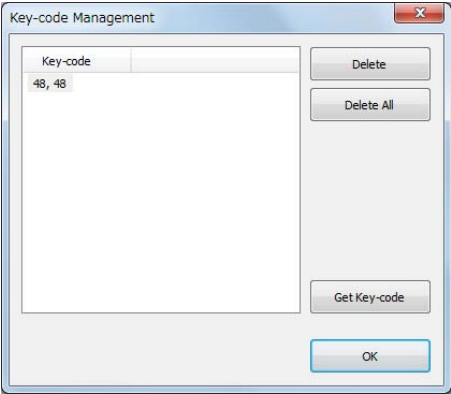


Reference

This section explains about the settings of TM Flash Logo Setup Utility.



| Setting | Description |
|---|--|
| Add | Adds the logo data. |
| Edit | Edits the halftone and brightness settings of the selected logo data. |
| Delete | Deletes the selected logo data from the list or deletes logos stored on the printer. |
| Test print | Prints the selected logos. |
| Change Logo Mode | <p>Displays "Select Mode for Storing Logo" screen to allow you to change the setting mode of the (Storing Logos). The current setting is displayed below (Storing Logos).</p>  |
| First Key-code Selection Mode | Specifies the logo identifying code. |
| Advanced Printer Driver Control Font Setting Mode | The Advanced Printer Driver allows you to assign a control font (h to l) to your logo instead of using a key code. |
| Key-code Nonuse Mode (not recommended) | Not recommended. |

| Setting | Description |
|---------------------|--|
| Key-code Management | <p>You can check the Key-code of the logo stored in the printer, or delete the logos.</p>  |
| Preview | Displays the logo image to be stored on the printer. Logo images stored on the printer are not displayed. |
| Save to File | Saves the configured logo data as a file to store it to the printer. The data can also be stored as a bmp file. |
| Store to Printer | Stores the configured logo data to the printer. |



Restrictions

This chapter describes the restrictions that apply to the APD.

OS Settings

1. When connecting Windows 7 / Vista / XP to a printer using serial I/F, printing may not operate correctly depending on the computer and printer combination. In such cases, disable FIFO in the Windows COM port detailed settings.
2. With a serial connection, when the OS recovers from a sleep or hibernate status, the printer may print "??."
3. With some computers, if the ECP mode is set for the parallel operation mode, printing may not operate correctly or Status API may become unavailable. In such cases, clear the ECP mode setting in the computer BIOS setting.
4. With Windows 7 / Vista / XP, use [Enable advanced printing features] (EMF spool) in the printer driver Properties - [Advanced] tab set to ON. Setting otherwise (RAW spool) applies the following restrictions to the GDI functions:
 - Raster operation cannot be printed as specified by StrtchBlt()/BitBlt().
 - When transferring bit information from display device context to the printer device context using StretchBlt(), the GDI function returns "Failure" and prevents the driver from printing.
5. When printing multiple pages, if you change the paper orientation from one page to another and/or other settings using ResetDC(), the print result may be incorrect. In such cases, set RAW spool (with Windows XP/Vista, set [Enable advanced printing features] to OFF) although some restrictions apply. See the previous paragraph for the restrictions.
6. When printing a device font in Microsoft Word, the following setting is necessary.
 - For Word 2003 or earlier :
From [Tools] - [Options] - [Compatibility], select "Microsoft Word 6.0/95" in [Recommended Options for] or make a check in "Use printer metrics to lay out document" in [Options].
 - For Word 2007:
From [Word Options] - [Advanced] - [Compatibility Options for], select "Microsoft Word 6.0/95" or "Custom" in [Lay out this document as if created in], and make a check in "Use printer metrics to lay out document" in [Layout Options].
 - For Word 2010:
From [File] - [Options] - [Advanced] - [Compatibility Options for], select "Microsoft Word 6.0/95" or "Custom" in [Lay out this document as if created in], and make a check in "Use printer metrics to lay out document" in [Layout Options].

7. If you print more than one Excel sheet at the same time when different print settings are set for each sheet, the setting for the last sheet is effective.
8. When printing with Microsoft ACCESS, the text in the print result may be misaligned or align left may not be possible.
9. Operation in a Windows XP multi-user environment is not guaranteed.
10. Refer to the table below for the coexistence of APD4 and OPOS drivers.

| | OPOS 2.65 or below | OPOS 2.66 or later |
|-------------------|--------------------|--------------------|
| APD 4.08 or below | - | - |
| APD 4.09 or later | - | ✓ |

Restrictions in the environment where redirected from a server
(Environment such as Terminal Service and the remote desktop)

1. When printing a device font with some applications, the characters may not be printed completely since the print position setting may be changed. and character may not printed.
2. Functions to print by sending the print data directly to the printer, such as WritePrinter cannot be used.
3. The properties for the printer driver cannot be set. Setting for the server reflects in that for the properties.
4. The utilities in the [Utility] tab in the properties of the printer driver cannot be used.
5. Help for the printer driver is not displayed.
6. When printing the device font TIS11_3_FontA/Bxx with some applications, the print position and the line feed position may not be specified correctly.
7. If [Substitute All] is executed by selecting the [Printer Settings] tab - [TrueType Font Substitution] - [Advanced settings] - [TrueType Font Substitution] settings under the terminal service environment, the print result may get garbled. In such a case, replace the fonts individually or print it as a graphic.

Printing

1. Print data outside of the printable area will not be printed.
2. When printing on receipt paper, blank space appears at the top of the paper which is greater than the top margin setting value. This is caused by the fact that the paper cutting position (autocutter) and the printing position (printer head) are separated and the distance between them results in extra margin.
3. Device fonts cannot be used in rotated, condensed or enlarged printing. Use Windows fonts.
4. If a device font and graphics data (Windows font or ruled line, etc.) are defined on the same line, the print result may be misaligned.
5. Printing takes longer with serial models than with other interfaces. If you want to print faster, other than a serial model is recommended.
6. With some TM printers using parallel connection, if the printer is turned on with the paper at near end position, a "no paper" error that prevents printing may occur. In such cases, after installing new paper, turn off the power, then turn it on again.
7. Euro currency symbol cannot be printed.
8. The paper size displayed in the printer driver Properties - [General] tab may differ from what is stated in the "Printer Specification." In such cases, select the paper size stated in the user's manual.
9. Align center or left using Control Font cannot be used with graphics printing.
10. [Separator Page] in the printer driver Properties - [Advanced] tab is not available.
11. With some applications, several device font size options are displayed, however, device font is always printed in a fixed size regardless of your size selection.
12. With some applications, print settings such as "Collate" and "Orientation" configured on the application side may differ from the printer driver settings. In such cases, the settings on the application side take priority. However, it is not possible to print beyond the printer's capabilities. (For example, printing in landscape format using device font)
13. Even when you specify bold or italic font settings, it will not be reflected in the printings. The underline is printed but the position is offset.
14. The color format is fixed to 24 BPP. So check that dmColor setting for Devmode is set to "Color" on the application side.
15. When water mark and 2-D symbol are used in a single data, the printout could be misaligned (displaced).
16. When you print a narrow width barcode with a high-resolution printer, all of the HRI characters may not be printed. In such case, specify narrow width fonts; FontB for the HRI characters.



Printer Specification

This chapter explains the setting items of Device Font, Control Font, ControlA Font, Resolution, Paper Size, Rotate, Reduce, and Water Mark.

CAUTION

Administrator permission is required for property settings of the printer driver.

| Item | Description |
|---------------------|--|
| Driver Name | EPSON TM-T81 ReceiptSA4 |
| Device Font | Prohibited when rotation is selected. Prohibited when resizing a font in a smaller size or when Water Mark is selected. |
| | FontA11 FontA12 FontA21 FontA22 FontA24 FontA42 FontA44 FontA48 FontA84 FontA88 FontB11 FontB12 FontB21 FontB22 FontB24 FontB42 FontB44 FontB48 FontB84 FontB88 |
| | Code Page PC437 (USA:Standard Europe) KU42 (Thai) TIS11 (Thai) TIS18 (Thai) TCVN-3 (Vietnamese) TCVN-3 (Vietnamese) |
| | TIS11_3_FontA11 TIS11_3_FontA12 TIS11_3_FontA21 TIS11_3_FontA22 TIS11_3_FontA24 TIS11_3_FontA42 TIS11_3_FontA44 TIS11_3_FontA48 TIS11_3_FontA84 TIS11_3_FontA88 TIS11_3_FontB11 TIS11_3_FontB12 TIS11_3_FontB21 TIS11_3_FontB22 TIS11_3_FontB24 TIS11_3_FontB42 TIS11_3_FontB44 TIS11_3_FontB48 TIS11_3_FontB84 TIS11_3_FontB88 TIS11_3_FontC11 TIS11_3_FontC12 TIS11_3_FontC21 TIS11_3_FontC22 TIS11_3_FontC24 TIS11_3_FontC42 TIS11_3_FontC44 TIS11_3_FontC48 TIS11_3_FontC84 TIS11_3_FontC88 TIS11_3_FontD11 TIS11_3_FontD12 TIS11_3_FontD21 TIS11_3_FontD22 TIS11_3_FontD24 TIS11_3_FontD42 TIS11_3_FontD44 TIS11_3_FontD48 TIS11_3_FontD84 TIS11_3_FontD88 |
| | CTVN-3_30_FontA11 CTVN-3_30_FontA12 CTVN-3_30_FontA21 CTVN-3_30_FontA22 CTVN-3_30_FontA24 CTVN-3_30_FontA42 CTVN-3_30_FontA44 CTVN-3_30_FontA48 CTVN-3_30_FontA84 CTVN-3_30_FontA88 CTVN-3_30_FontB11 CTVN-3_30_FontB12 CTVN-3_30_FontB21 CTVN-3_30_FontB22 CTVN-3_30_FontB24 CTVN-3_30_FontB42 CTVN-3_30_FontB44 CTVN-3_30_FontB48 CTVN-3_30_FontB84 CTVN-3_30_FontB88 CTVN-3_31_FontA11 CTVN-3_31_FontA12 CTVN-3_31_FontA21 CTVN-3_31_FontA22 CTVN-3_31_FontA24 CTVN-3_31_FontA42 CTVN-3_31_FontA44 CTVN-3_31_FontA48 CTVN-3_31_FontA84 CTVN-3_31_FontA88 CTVN-3_31_FontB11 CTVN-3_31_FontB12 CTVN-3_31_FontB21 CTVN-3_31_FontB22 CTVN-3_31_FontB24 CTVN-3_31_FontB42 CTVN-3_31_FontB44 CTVN-3_31_FontB48 CTVN-3_31_FontB84 CTVN-3_31_FontB88 |
| | |
| Barcode Font | Barcode Font Points determined. When specifying a value other than this, the Barcode is not printed. |
| | Barcode1~Barcode8 Layout possible Barcode Codabar Code39 ITF JAN13(EAN) JAN8(EAN) UPC-A UPC-E Code93 Code128 |
| 2D-Code Font | 2D-Code1~2D-Code8 Layout possible 2D-Code PDF417,QRCode |

